



District Accountability Plan Goal 4, Objective B Engaging the Business Community Annual Report – May 2009

Executive Summary

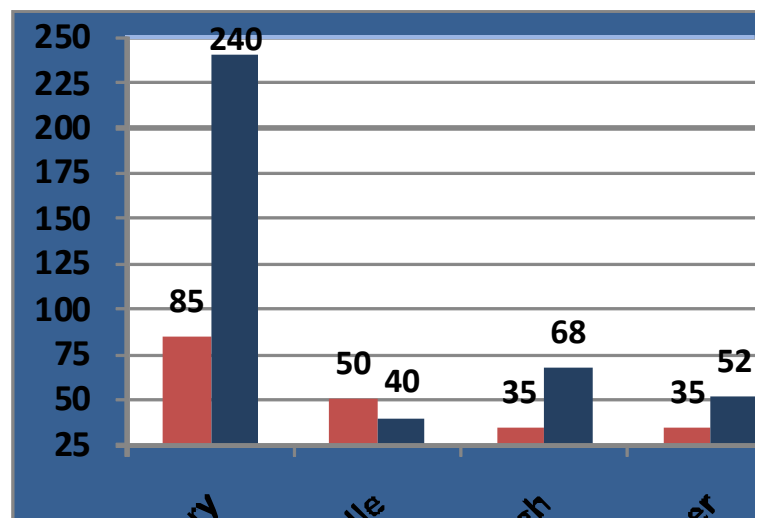
The Savannah-Chatham County Public School System (SCCPSS) continues to work to build and improve the relationship between our public schools and the business community. This has been accomplished through individual meetings, networking through the Savannah Area Chamber of Commerce and its COMPACT agreement with our schools assuring their concerted support of continued business partnerships and collaboration. In addition, the Office of Communications and Community Engagement (OCCE) has teamed with principals to identify area businesses for partnership with their respective schools.

SCCPSS has enjoyed a long and robust support from our local business community. The district has 319 business partners which are actively involved in our individual schools. Our district accountability goal is to have a minimum of five business partnerships by the end of school year 2012. Currently, we have many schools that have already exceeded these expectations. To date, thirty-three schools have met or exceeded the objective of five active business partnerships. While nineteen schools have yet to have reached this goal, we are confident that we will be able to meet our established objective by 2012. A prime example of business partnerships contributing to the overall success of a school can be found at Woodville-Tompkins Technical and Career Institute. They currently have twenty-five active business partnerships. Additionally, Beach, Johnson and Savannah Arts Academy's business partnerships number fifteen, nineteen and seventeen respectively. This is significant when you consider most of the business partnerships in the school district can be found in the elementary schools. In particular, Gadsden Elementary can boast of twenty business partnerships and West Chatham Elementary twenty-three. The cooperation and collaboration created through this synergy cannot be underestimated. The chart, Business Partnerships - Figure 1, clearly indicates the focus and growth of business involvement in our elementary schools.

While Hubert Middle School enjoys the assistance of eight business partners, and West Chatham Middle School has nine, the remaining are reporting less than five. OCCE will continue to assist these principals and their schools in identifying potential partners.

In conclusion, the OCCE will continue to support and assist the schools in reaching and exceeding their goals. We will continue to work with each of the principals in identifying and building business partnerships. The following strategies will be utilized:

- Work with the PTA's and their presidents to determine if their members are business owners and foster the relationship.
- Continue working with the Chamber of Commerce to develop new partnerships for our schools.
- Identify committees, associations, and business groups for developing partnerships.



2008-2009 Business Partners Detailed Report
Elementary Schools

School	Number of Business Partners	Met Target of 5 or more BP's by 2012
Bartow	12	Yes
Bloomingtondale	6	Yes
Butler	8	Yes
Coastal Empire Montessori	0	No
East Broad	10	Yes
Ellis	11	Yes
Gadsden	20	Yes
Garden City	5	Yes
Garrison	3	No
Georgetown	6	Yes
Gould	6	Yes
Haven	1	No
Heard	10	Yes
Hesse	3	No
Hodge	2	No
Howard	9	Yes
Islands	2	No
Isle of Hope	18	Yes
Largo-Tibet	10	Yes
Low	2	No
Marshpoint	12	Yes
Pooler	8	Yes
Port Wentworth	12	Yes
Pulaski	5	Yes
J.G. Smith	5	Yes
Southwest	7	Yes
Spencer	10	Yes
Thunderbolt	4	No
West Chatham	23	Yes
White Bluff	7	Yes
Windsor Forest	3	No

2008-2009 Business Partners Detailed Report
Middle Schools

School	Number of Business Partners	Met Target of 5 or more BP's by 2012
Bartlett	2	No
Coastal	4	No
DeRenne	4	No
Hubert	8	Yes
Mercer	4	No
Myers	4	No
Oglethorpe Academy	3	No
Shuman	2	No
Southwest	0	No
West Chatham	9	Yes

High Schools

School	Number of Business Partners	Met Target of 5 or more BP's by 2012
Beach	15	Yes
Groves	5	Yes
Jenkins	5	Yes
Johnson	19	Yes
Savannah Arts	17	Yes
Savannah High	4	No
Windsor Forest	3	No

Other Sites

School	Number of Business Partners	Met Target of 5 or more BP's by 2012
Early College	9	Yes
Oatland Island	7	Yes
Scott	11	Yes
Woodville-Tompkins	25	Yes