



**District Accountability Plan Goal 1, Objective B**  
**GEORGIA CRITERION-REFERENCED COMPETENCY TESTS (CRCT)**  
**Executive Summary**  
**Spring 2011**

---

**About the CRCT**

The Georgia CRCT is designed to measure student achievement relative to the content standards of the Georgia Performance Standards (GPS). In 2011 students in grades 3 – 8 participated in reading, English/language arts, mathematics, science, and social studies subject area tests. CRCTs in grades 1 and 2 were not administered in 2011 due to state budget cuts.

When analyzing CRCT performance over time it should be noted that GPS-based results are not comparable to prior years' QCC-based results. Under the GPS, a score of 800 or above indicates performance which meets the state standard and a score of 850 or above exceeds the standard. Passing scores are those which either meet or exceed the state standard. Third-grade students are required to pass the reading portion of the CRCT in order to be promoted to the fourth grade, while students in the fifth and eighth grades must pass both reading and math in order to advance to the next grade. Students who do not pass these areas on the first attempt have a second opportunity to test.

This executive summary is a follow-up to the board presentation on Reading on Grade Level. District Accountability System Goal 1, Objective B seeks to increase the percentage of students meeting or exceeding standard in the core content areas as measured by the CRCT, and has established the following performance targets for grades 3, 5, and 8:

**By school year 2011-12**

	<b>Grade 3</b>	<b>Grade 5</b>	<b>Grade 8</b>
Reading	87	89	92
ELA	88	91	90
Mathematics	73	74	65
Social Studies	77	71	65
Science	77	76	62

Highlights from the spring 2011 administration of the CRCT include:

**Reading**

- The percentage of students meeting/exceeding standard in reading ranged from 83% in grade seven to 95% in grade eight.
- SCCPSS has increased or maintained performance in all grade levels over the past four years, and has achieved the 2012 performance target in grades three and eight.

- Butler Elementary, Juliette Low Elementary, Spencer Elementary, Thunderbolt Elementary, Hubert Middle School, and Myers Middle School achieved double-digit gains in reading pass rates over the past four years.

### **English/Language Arts (ELA)**

- The percentage of students meeting/exceeding standard in ELA ranged between 84% in grade four, to 91% in grade five.
- SCCPSS achieved increases over 2008 ELA pass rates in all grade levels, with gains ranging from 4 to 9 points, and achieved the 2012 performance target in grades five and eight.
- Juliette Low earned the greatest four year increase among elementary schools, while Bartlett and Myers increased the most among middle schools.

### **Mathematics**

- The percentage of students meeting/exceeding standard in math ranged from 66% in grades six and eight, to 83% in grade five.
- SCCPSS students in all grade levels achieved double-digit gains over spring 2008 pass rates, and have attained the district's 2012 performance targets.
- Butler Elementary achieved the greatest four year gains among elementary schools, while Southwest Middle earned the highest increases among middle schools.

### **Science**

- The percentage of students meeting/exceeding standard in science ranged from 47% in grade eight, to 74% in grade three.
- SCCPSS students achieved increases in science pass rates compared to spring 2008 in all grade levels.
- Among elementary schools, Butler earned the highest increases in science pass rates, while Bartlett and Coastal achieved the greatest gains in middle grades.

### **Social Studies**

- Social studies pass rates ranged from 57% in grade six, to 77% in grade three.
- The social studies pass rate rose by 11 points over the past four years in grade eight, while sixth graders achieved a 10 point increase compared to last year. (Note: eighth grade is the only grade level in which four year comparative data is available, due to GPS transition in elementary grades and invalidation/field testing in grades six and seven).
- SCCPSS has met its 2012 performance target in grade three.
- Among elementary grades, Heard Elementary School achieved the greatest gain compared to last year, while Bartlett Middle School had the highest gain in grade eight.

## **Overall**

- SSCPSS performance is strongest in the areas of reading and English/language arts; however, students are achieving the greatest performance gains in math.
- SSCPSS pass rates are below the state average, but compare favorably to those of the state-assigned group of demographically similar districts\*. Furthermore, the district's performance gains typically outpace both the state and comparison group.
- Retest opportunities in third, fifth, and eighth grade reading, and fifth and eighth grade mathematics increased pass rates in those areas by 2 to 14 percentage points, resulting in pass rates between 80-97%.

\*This group includes Atlanta City Schools, along with Clarke, Clayton, DeKalb, Dougherty, Liberty, Muscogee, Richmond, Spalding, and Troupe counties.

## **Actions**

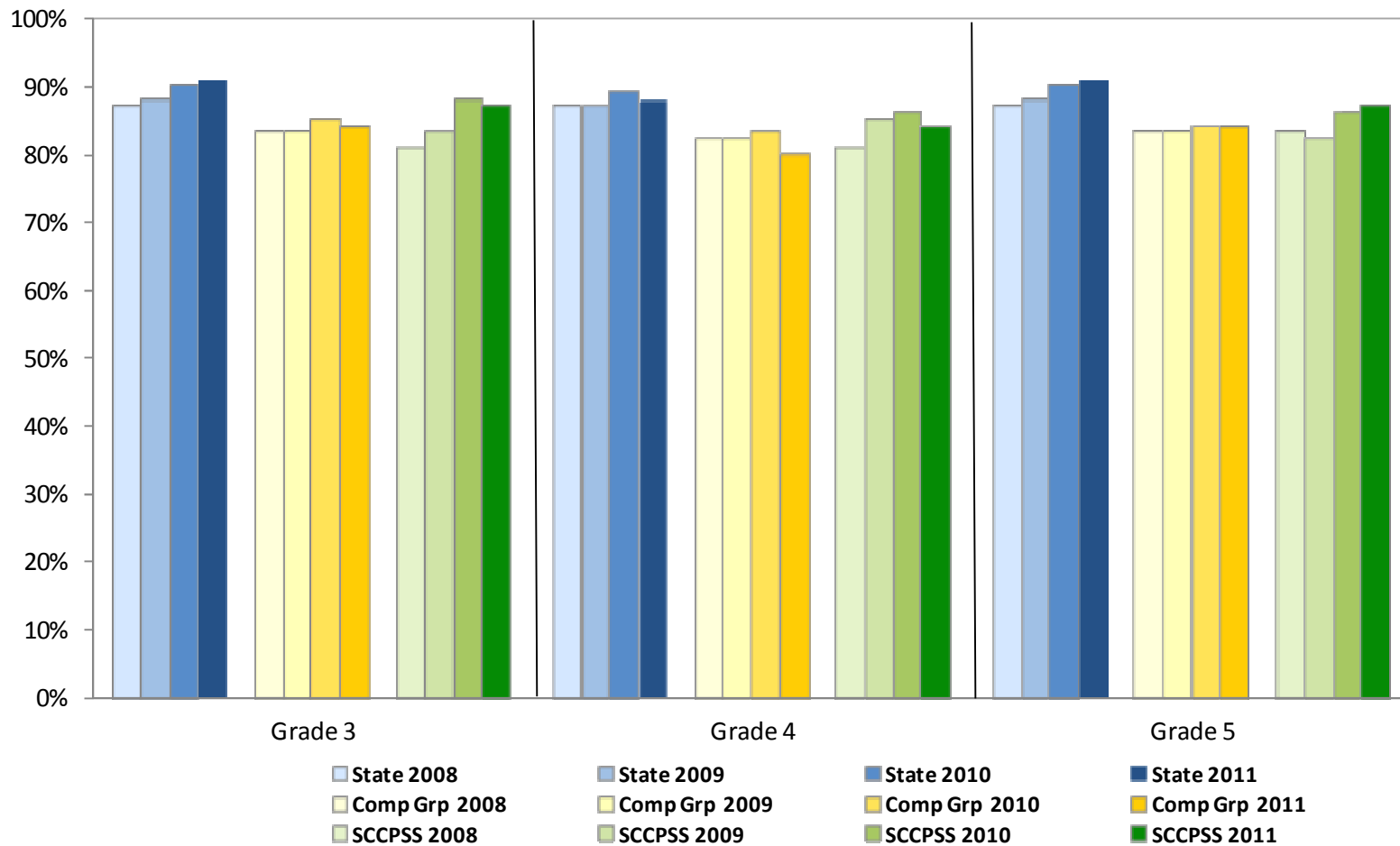
In SY 2011-12, school data teams will analyze Quarterly Assessment results in Reading/language arts and math, along with the Online Assessment System Science Diagnostic Test results after each administration in October, January, and March. The district content directors will assist schools in developing prescriptive plans for instruction based on these results.

In addition, The District Reading Specialist will provide follow-up assistance on the reading comprehension and fluency strategies provided to the middle school teachers in August. Furthermore, grade level and social studies content teachers at each school will use common formative assessment data each nine weeks to determine mastery of standards and instructional focus. Principals will review data results and strategies with teachers.

## Percentage of Students Meeting/Exceeding Standard on the CRCT: Elementary Grades Reading

	Grade 3						Grade 4						Grade 5					
	2008	2009	2010	2011	1 Yr Chg	4 Yr Chg	2008	2009	2010	2011	1 Yr Chg	4 Yr Chg	2008	2009	2010	2011	1 Yr Chg	4 Yr Chg
<b>State</b>	87	88	90	91	1	4	87	87	89	88	-1	1	87	88	90	91	1	4
<b>Comp Grp</b>	83	83	85	84	-1	1	82	82	83	80	-3	-2	83	83	84	84	0	1
<b>SCCPSS</b>	81	83	88	87	-1	6	81	85	86	84	-2	3	83	82	86	87	1	4

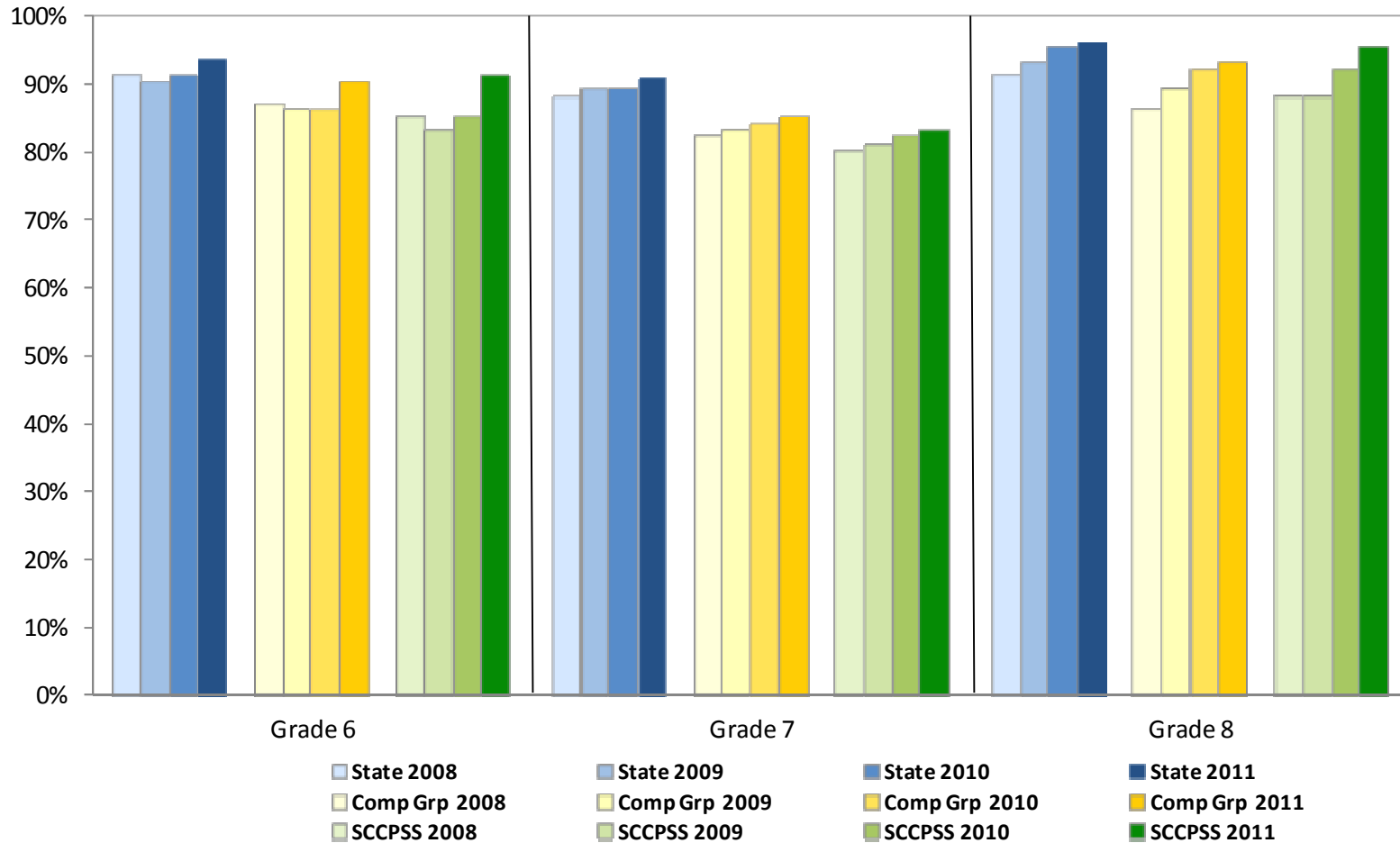
Indicates an increase
  At/above 2012 DAS target (grades 3 & 5)



## Percentage of Students Meeting/Exceeding Standard on the CRCT: Middle Grades Reading

	Grade 6						Grade 7						Grade 8					
	2008	2009	2010	2011	1 Yr Chg	4 Yr Chg	2008	2009	2010	2011	1 Yr Chg	4 Yr Chg	2008	2009	2010	2011	1 Yr Chg	4 Yr Chg
<b>State</b>	91	90	91	94	3	3	88	89	89	91	2	3	91	93	95	96	1	5
<b>Comp Grp</b>	87	86	86	90	4	3	82	83	84	85	1	3	86	89	92	93	1	7
<b>SCCPSS</b>	85	83	85	91	6	6	80	81	82	83	1	3	88	88	92	95	3	7

Indicates an increase
  At/above 2012 DAS target (grade 8)



## Percentage of Students Meeting/Exceeding Standard on the CRCT: Elementary School Reading

	Grade 3						Grade 4						Grade 5					
	2008	2009	2010	2011	1 Yr Chg	4 Yr Chg	2008	2009	2010	2011	1 Yr Chg	4 Yr Chg	2008	2009	2010	2011	1 Yr Chg	4 Yr Chg
<b>State</b>	87	88	90	91	1	4	87	87	89	88	-1	1	87	88	90	91	1	4
<b>Comp Grp</b>	83	83	85	84	-1	1	82	82	83	80	-3	-2	83	83	84	84	0	1
<b>SCCPSS</b>	81	83	88	87	-1	6	81	85	86	84	-2	3	83	82	86	87	1	4
Bartow	73	89	84	78	-6	5	70	85	69	66	-3	-4	81	71	80	75	-5	-6
Bloomingtondale	94	82	91	92	1	-2	88	89	89	93	4	5	96	91	89	85	-4	-11
Butler	72	70	78	83	5	11	57	76	81	84	3	27	71	77	79	86	7	15
Gadsden	69	86	83	74	-9	5	67	70	88	81	-7	14	83	76	81	86	5	3
Garden City	72	69	86	72	-14	0	70	79	75	81	6	11	76	62	77	76	-1	0
Gould	80	84	82	83	1	3	87	82	85	81	-4	-6	84	81	86	84	-2	0
Haven	74	76	91	87	-4	13	68	74	72	72	0	4	73	56	75	79	4	6
Heard	88	82	90	91	1	3	93	91	88	89	1	-4	83	89	86	96	10	13
Hodge	73	80	82	73	-9	0	80	88	88	74	-14	-6	78	72	70	83	13	5
Howard	99	97	98	98	0	-1	95	97	97	95	-2	0	96	95	98	98	0	2
Largo-Tibet	90	84	89	84	-5	-6	92	86	89	85	-4	-7	82	85	86	84	-2	2
Low	60	77	86	85	-1	25	66	70	75	76	1	10	63	76	81	91	10	28
Marshpoint	95	98	99	96	-3	1	95	95	95	95	0	0	92	97	97	98	1	6
Pooler	93	91	92	97	5	4	95	96	93	75	-18	-20	88	86	89	88	-1	0
Pt. Wentworth	82	87	90	89	-1	7	76	82	86	79	-7	3	80	74	81	87	6	7
Pulaski	92	89	88	92	4	0	83	88	86	96	10	13	90	79	91	89	-2	-1
J. G. Smith	91	92	95	98	3	7	94	90	98	96	-2	2	93	95	95	91	-4	-2
Shuman	na	na	na	75	na	na	na	na	na	84	na	na	na	na	na	86	na	na
Southwest	81	84	85	89	4	8	82	86	91	82	-9	0	81	90	95	96	1	15
Spencer	62	64	71	84	13	22	70	62	67	79	12	9	67	72	68	85	17	18
Thunderbolt	72	77	89	89	0	17	71	75	79	72	-7	1	76	73	82	90	8	14
West Chatham	92	87	90	92	2	0	85	93	86	89	3	4	90	87	89	87	-2	-3
White Bluff	78	81	86	81	-5	3	87	86	87	73	-14	-14	80	84	90	86	-4	6
Windsor Forest	93	82	97	97	0	4	82	89	89	93	4	11	82	86	95	91	-4	9

█ Indicates an increase

█ At/above 2012 DAS target (grades 3 & 5)

na indicates new or reconfigured school

## Percentage of Students Meeting/Exceeding Standard on the CRCT: K-8 School Reading

	Grade 3						Grade 4						Grade 5					
	2008	2009	2010	2011	1 Yr Chg	4 Yr Chg	2008	2009	2010	2011	1 Yr Chg	4 Yr Chg	2008	2009	2010	2011	1 Yr Chg	4 Yr Chg
<b>State</b>	87	88	90	91	1	4	87	87	89	88	-1	1	87	88	90	91	1	4
<b>Comp Grp</b>	83	83	85	84	-1	1	82	82	83	80	-3	-2	83	83	84	84	0	1
<b>SCCPSS</b>	81	83	88	87	-1	6	81	85	86	84	-2	3	83	82	86	87	1	4
East Broad	62	67	76	66	-10	4	75	64	69	57	-12	-18	71	73	73	68	-5	-3
Ellis	89	85	90	98	8	9	94	88	88	91	3	-3	90	98	89	97	8	7
Garrison	na	na	na	96	na	na	na	na	na	98	na	na	na	na	na	99	na	na
Georgetown	87	83	91	94	3	7	85	91	87	92	5	7	91	83	91	89	-2	-2
Godley Station	na	na	na	97	na	na	na	na	na	96	na	na	na	na	na	88	na	na
Hesse	94	97	93	93	0	-1	86	94	95	91	-4	5	87	89	96	92	-4	5
Isle of Hope	81	88	93	90	-3	9	91	90	79	87	8	-4	94	88	89	82	-7	-12

	Grade 6						Grade 7						Grade 8					
	2008	2009	2010	2011	1 Yr Chg	4 Yr Chg	2008	2009	2010	2011	1 Yr Chg	4 Yr Chg	2008	2009	2010	2011	1 Yr Chg	4 Yr Chg
<b>State</b>	91	90	91	94	3	3	88	89	89	91	2	3	91	93	95	96	1	5
<b>Comp Grp</b>	87	86	86	90	4	3	82	83	84	85	1	3	86	89	92	93	1	7
<b>SCCPSS</b>	85	83	85	91	6	6	80	81	82	83	1	3	88	88	92	95	3	7
East Broad	na	na	na	87	na	na	na	na	na	na	na	na	na	na	na	na	na	na
Ellis	91	96	100	98	-2	7	86	86	98	98	0	12	97	100	96	98	2	1
Garrison	na	na	na	100	na	na	na	na	na	98	na	na	na	na	na	100	na	na
Georgetown	na	na	na	96	na	na	na	na	na	na	na	na	na	na	na	na	na	na
Godley Station	na	na	na	93	na	na	na	na	na	90	na	na	na	na	na	98	na	na
Hesse	na	97	98	96	-2	na	na	na	96	90	-6	na	na	na	na	100	na	na
Isle of Hope	na	na	87	95	8	na	na	na	na	98	na	na	na	na	na	na	na	na

█ Indicates an increase

█ At/above 2012 DAS target (grades 3, 5, & 8)

na indicates new or reconfigured school

## Percentage of Students Meeting/Exceeding Standard on the CRCT: Middle School Reading

	Grade 6						Grade 7						Grade 8					
	2008	2009	2010	2011	1 Yr Chg	4 Yr Chg	2008	2009	2010	2011	1 Yr Chg	4 Yr Chg	2008	2009	2010	2011	1 Yr Chg	4 Yr Chg
<b>State</b>	91	90	91	94	3	3	88	89	89	91	2	3	91	93	95	96	1	5
<b>Comp Grp</b>	87	86	86	90	4	3	82	83	84	85	1	3	86	89	92	93	1	7
<b>SCCPSS</b>	85	83	85	91	6	6	80	81	82	83	1	3	88	88	92	95	3	7
Bartlett	83	76	83	88	5	5	75	78	81	84	3	9	83	82	89	95	6	12
Coastal	90	89	94	98	4	8	89	89	86	94	8	5	91	95	94	99	5	8
DeRenne	90	84	84	89	5	-1	77	82	79	67	-12	-10	90	85	90	93	3	3
Hubert	71	75	75	79	4	8	60	70	79	73	-6	13	80	75	88	88	0	8
Mercer	76	82	79	83	4	7	80	78	80	71	-9	-9	90	87	90	91	1	1
Myers	80	80	80	95	15	15	78	77	69	80	11	2	79	84	93	96	3	17
Oglethorpe	95	93	98	97	-1	2	92	97	94	98	4	6	99	97	99	100	1	1
Southwest	85	83	88	94	6	9	88	77	86	87	1	-1	89	93	91	98	7	9
West Chatham	85	82	81	91	10	6	79	77	80	80	0	1	90	88	92	90	-2	0

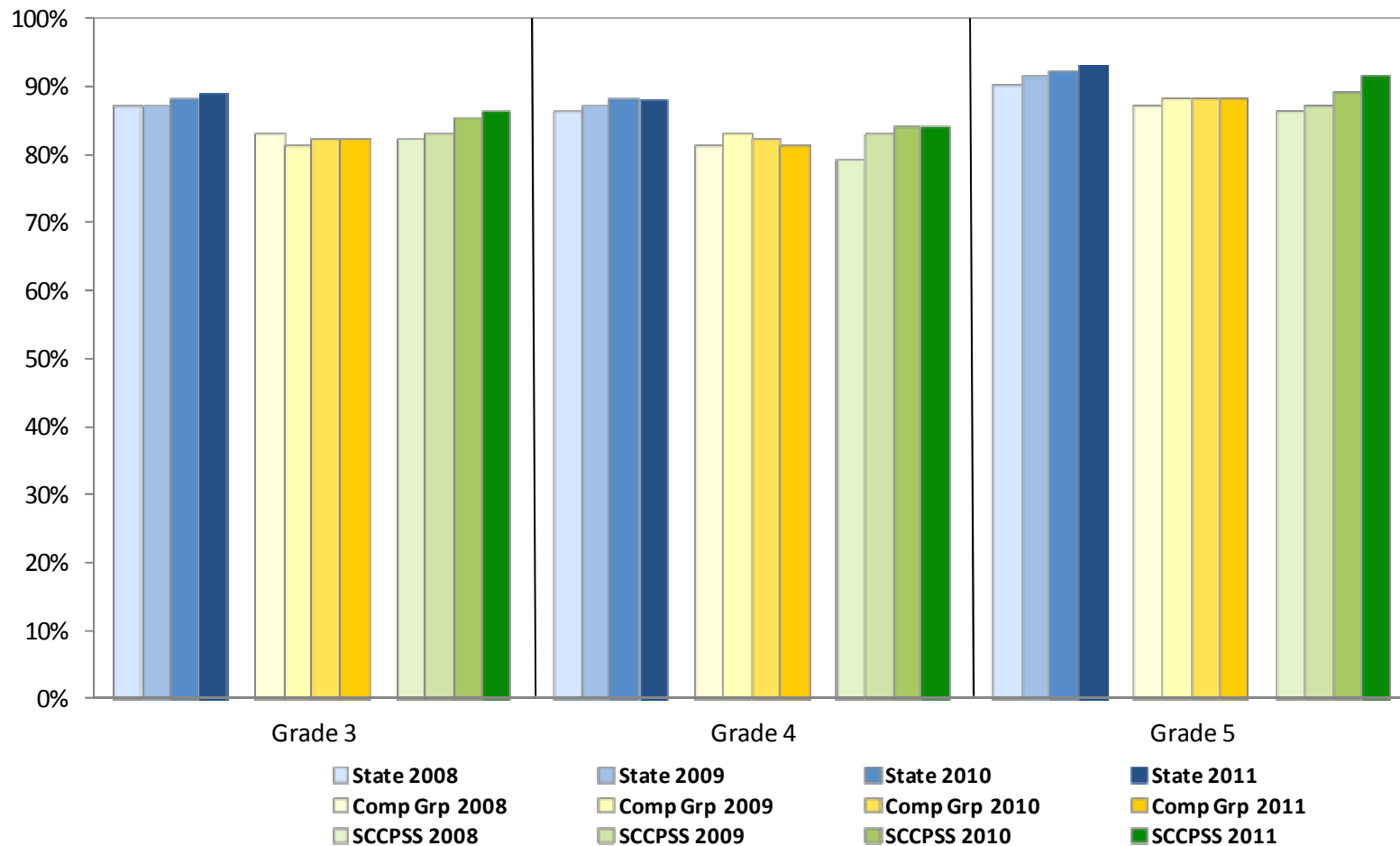
  Indicates an increase    
   At/above 2012 DAS target (grade 8)



## Percentage of Students Meeting/Exceeding Standard on the CRCT: Spring 2011 English/language arts

	Grade 3						Grade 4						Grade 5					
	2008	2009	2010	2011	1 Yr Chg	4 Yr Chg	2008	2009	2010	2011	1 Yr Chg	4 Yr Chg	2008	2009	2010	2011	1 Yr Chg	4 Yr Chg
<b>State</b>	87	87	88	89	1	2	86	87	88	88	0	2	90	91	92	93	1	3
<b>Comp Grp</b>	83	81	82	82	0	-1	81	83	82	81	-1	0	87	88	88	88	0	1
<b>SCCPSS</b>	82	83	85	86	1	4	79	83	84	84	0	5	86	87	89	91	2	5

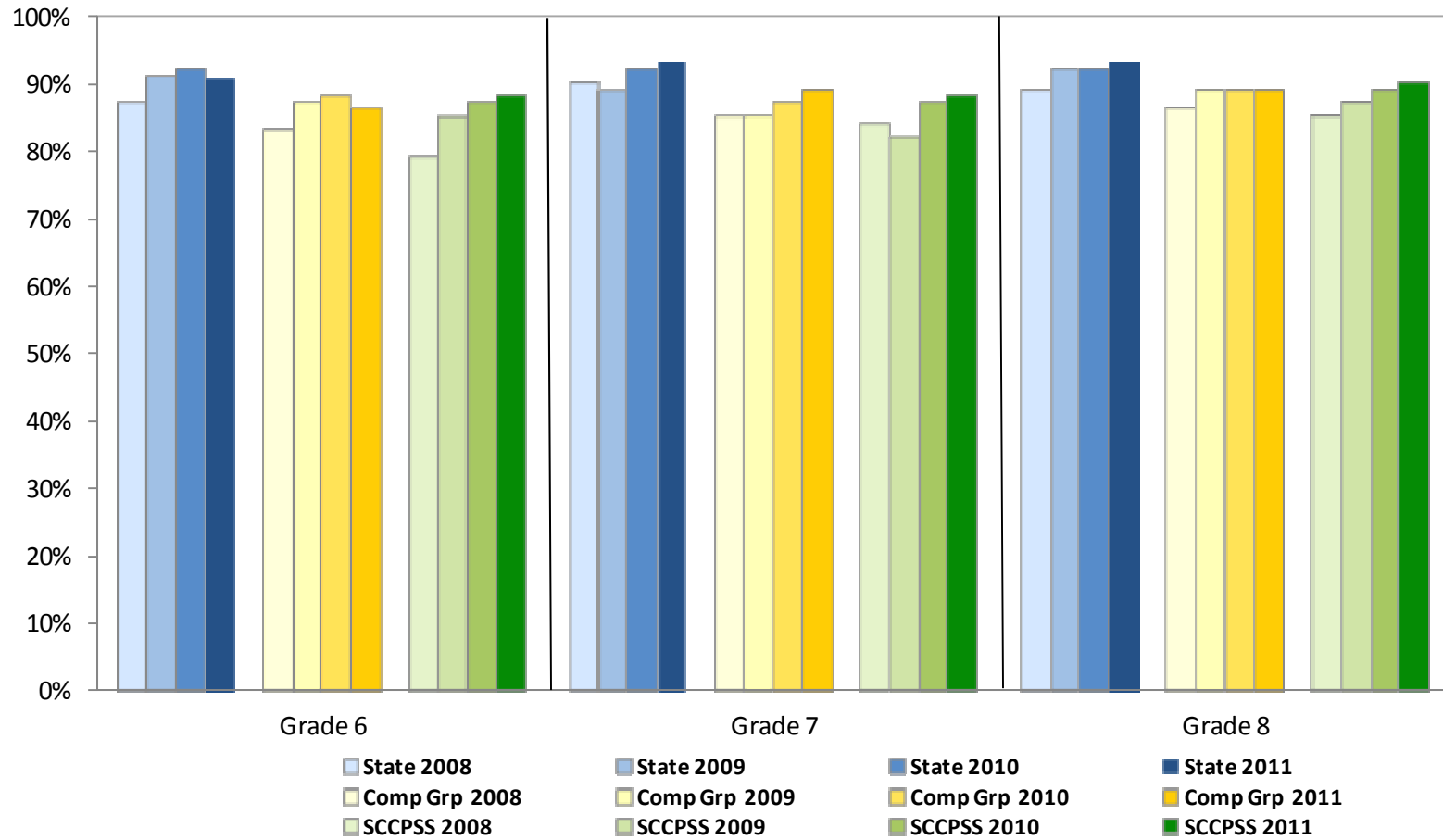
  Indicates an increase     
   At/above 2012 DAS target (grades 3 & 5)



## Percentage of Students Meeting/Exceeding Standard on the CRCT: Middle Grades English/language arts

	Grade 6						Grade 7						Grade 8					
	2008	2009	2010	2011	1 Yr Chg	4 Yr Chg	2008	2009	2010	2011	1 Yr Chg	4 Yr Chg	2008	2009	2010	2011	1 Yr Chg	4 Yr Chg
<b>State</b>	87	91	92	91	-1	4	90	89	92	93	1	3	89	92	92	93	1	4
<b>Comp Grp</b>	83	87	88	86	-2	3	85	85	87	89	2	4	86	89	89	89	0	3
<b>SCCPSS</b>	79	85	87	88	1	9	84	82	87	88	1	4	85	87	89	90	1	5

  Indicates an increase     
   At/above 2012 DAS target (grade 8)



**Percentage of Students Meeting/Exceeding Standard on the CRCT: Elementary School English/language arts**

	Grade 3						Grade 4						Grade 5					
	2008	2009	2010	2011	1 Yr Chg	4 Yr Chg	2008	2009	2010	2011	1 Yr Chg	4 Yr Chg	2008	2009	2010	2011	1 Yr Chg	4 Yr Chg
<b>State</b>	87	87	88	89	1	2	86	87	88	88	0	2	90	91	92	93	1	3
<b>Comp Grp</b>	83	81	82	82	0	-1	81	83	82	81	-1	0	87	88	88	88	0	1
<b>SCCPSS</b>	82	83	85	86	1	4	79	83	84	84	0	5	86	87	89	91	2	5
Bartow	74	85	86	74	-12	0	67	82	68	72	4	5	86	79	86	79	-7	-7
Bloomington	90	74	86	89	3	-1	93	80	84	85	1	-8	94	95	90	92	2	-2
Butler	79	71	85	87	2	8	67	70	79	82	3	15	78	84	88	96	8	18
Gadsden	81	81	83	73	-10	-8	58	78	81	78	-3	20	87	85	88	87	-1	0
Garden City	74	72	83	76	-7	2	62	70	77	84	7	22	75	69	73	83	10	8
Gould	72	85	79	85	6	13	84	76	82	77	-5	-7	87	89	88	93	5	6
Haven	70	80	91	85	-6	15	65	72	79	72	-7	7	73	68	71	90	19	17
Heard	89	84	87	94	7	5	88	87	88	89	1	1	90	92	89	94	5	4
Hodge	73	84	80	76	-4	3	84	86	91	68	-23	-16	93	85	78	89	11	-4
Howard	95	98	97	96	-1	1	88	97	99	92	-7	4	92	99	99	99	0	7
Largo-Tibet	85	90	82	84	2	-1	85	75	83	78	-5	-7	87	88	86	87	1	0
Low	64	73	80	82	2	18	66	71	66	84	18	18	77	75	87	89	2	12
Marshpoint	95	97	97	96	-1	1	95	94	96	97	1	2	92	99	94	98	4	6
Pooler	94	93	85	95	10	1	92	92	88	76	-12	-16	93	90	91	93	2	0
Pt. Wentworth	80	86	86	86	0	6	76	78	85	77	-8	1	80	84	84	88	4	8
Pulaski	88	91	89	89	0	1	80	90	86	88	2	8	87	76	94	88	-6	1
J. G. Smith	91	92	92	98	6	7	89	94	98	94	-4	5	95	87	94	100	6	5
Shuman	na	na	na	74	na	na	na	na	na	80	na	na	na	na	na	88	na	na
Southwest	83	86	77	87	10	4	76	87	86	82	-4	6	80	91	92	93	1	13
Spencer	70	64	67	75	8	5	67	73	65	82	17	15	69	81	77	90	13	21
Thunderbolt	77	80	87	86	-1	9	70	77	78	75	-3	5	81	80	88	96	8	15
West Chatham	92	82	90	93	3	1	86	88	83	88	5	2	87	92	89	90	1	3
White Bluff	70	76	78	71	-7	1	81	80	86	76	-10	-5	84	89	91	90	-1	6
Windsor Forest	91	85	94	92	-2	1	74	95	88	91	3	17	87	97	94	99	5	12

Indicates an increase

At/above 2012 DAS target (grades 3 & 5)

na indicates new or reconfigured school

## Percentage of Students Meeting/Exceeding Standard on the CRCT: K-8 School English/language arts

	Grade 3						Grade 4						Grade 5					
	2008	2009	2010	2011	1 Yr Chg	4 Yr Chg	2008	2009	2010	2011	1 Yr Chg	4 Yr Chg	2008	2009	2010	2011	1 Yr Chg	4 Yr Chg
<b>State</b>	87	87	88	89	1	2	86	87	88	88	0	2	90	91	92	93	1	3
<b>Comp Grp</b>	83	81	82	82	0	-1	81	83	82	81	-1	0	87	88	88	88	0	1
<b>SCCPSS</b>	82	83	85	86	1	4	79	83	84	84	0	5	86	87	89	91	2	5
East Broad	64	63	67	68	1	4	73	66	75	54	-21	-19	73	84	78	78	0	5
Ellis	86	83	86	94	8	8	94	81	82	84	2	-10	92	98	93	100	7	8
Garrison	65	65	64	96	na	na	60	85	82	98	na	na	88	92	89	100	na	na
Georgetown	86	84	88	91	3	5	79	93	83	94	11	15	85	85	86	93	7	8
Godley Station	na	na	na	94	na	na	na	na	na	94	na	na	na	na	na	94	na	na
Hesse	91	89	89	90	1	-1	84	94	92	95	3	11	86	92	97	93	-4	7
Isle of Hope	89	84	84	87	3	-2	87	89	83	93	10	6	98	91	91	93	2	-5

	Grade 6						Grade 7						Grade 8					
	2008	2009	2010	2011	1 Yr Chg	4 Yr Chg	2008	2009	2010	2011	1 Yr Chg	4 Yr Chg	2008	2009	2010	2011	1 Yr Chg	4 Yr Chg
<b>State</b>	87	91	92	91	-1	4	90	89	92	93	1	3	89	92	92	93	1	4
<b>Comp Grp</b>	83	87	88	86	-2	3	85	85	87	89	2	4	86	89	89	89	0	3
<b>SCCPSS</b>	79	85	87	88	1	9	84	82	87	88	1	4	85	87	89	90	1	5
East Broad	na	na	na	83	na	na	na	na	na	na	na	na	na	na	na	na	na	na
Ellis	89	96	100	94	-6	5	93	86	98	98	0	5	97	100	93	100	7	3
Garrison	na	na	na	100	na	na	na	na	na	98	na	na	na	na	na	100	na	na
Georgetown	na	na	na	91	na	na	na	na	na	na	na	na	na	na	na	na	na	na
Godley Station	na	na	na	90	na	na	na	na	na	90	na	na	na	na	na	96	na	na
Hesse	na	95	95	98	3	na	na	na	92	90	-2	na	na	na	na	96	na	na
Isle of Hope	na	na	82	87	5	na	na	na	na	98	na	na	na	na	na	na	na	na

█ Indicates an increase

█ At/above 2012 DAS target (grades 3, 5, & 8)

na indicates new or reconfigured school

## Percentage of Students Meeting/Exceeding Standard on the CRCT: Middle School English/language arts

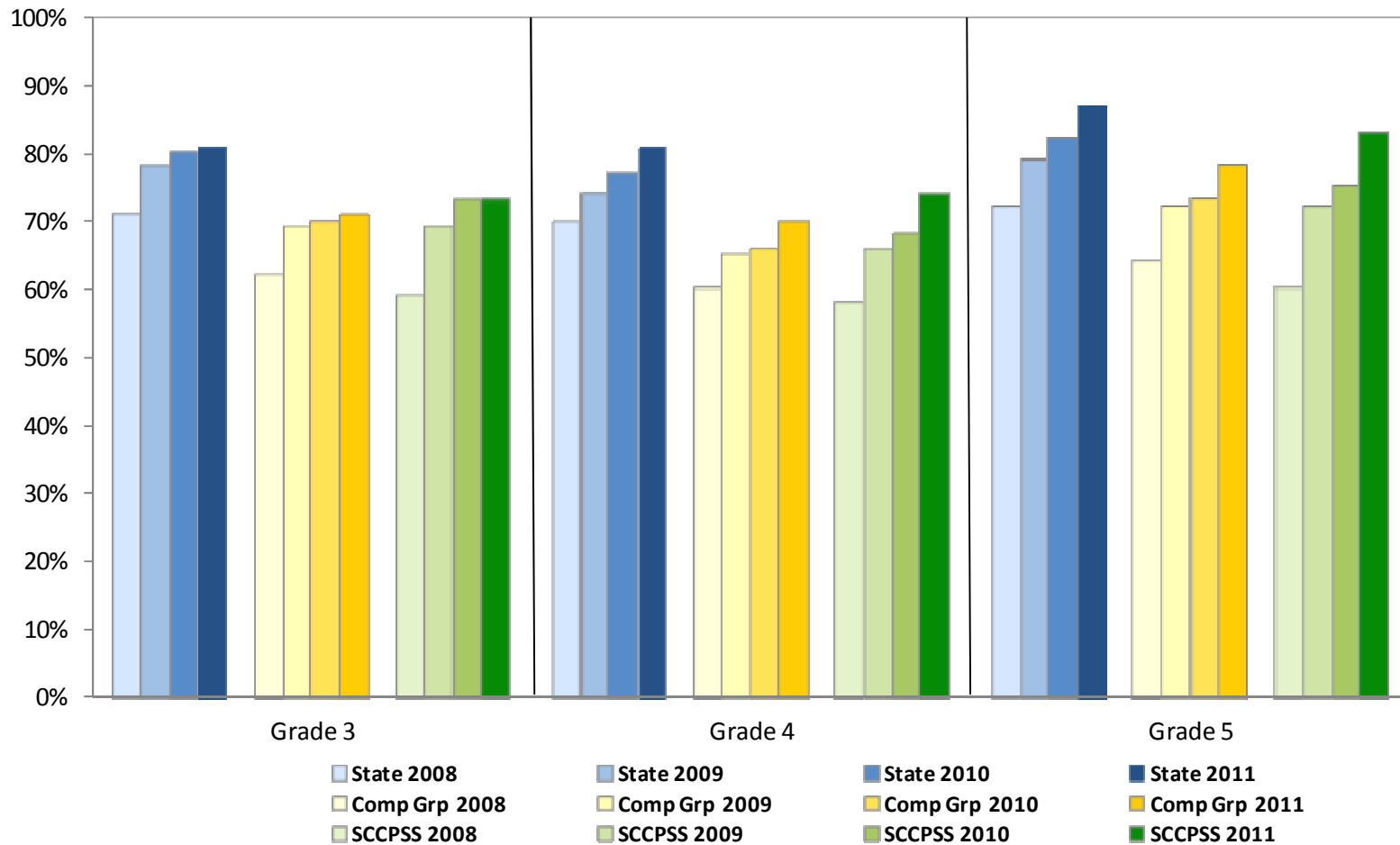
	Grade 6						Grade 7						Grade 8					
	2008	2009	2010	2011	1 Yr Chg	4 Yr Chg	2008	2009	2010	2011	1 Yr Chg	4 Yr Chg	2008	2009	2010	2011	1 Yr Chg	4 Yr Chg
<b>State</b>	87	91	92	91	-1	4	90	89	92	93	1	3	89	92	92	93	1	4
<b>Comp Grp</b>	83	87	88	86	-2	3	85	85	87	89	2	4	86	89	89	89	0	3
<b>SCCPSS</b>	79	85	87	88	1	9	84	82	87	88	1	4	85	87	89	90	1	5
Bartlett	73	78	90	88	-2	15	79	72	84	86	2	7	79	80	85	87	2	8
Coastal	87	91	95	96	1	9	90	89	92	94	2	4	90	94	92	95	3	5
DeRenne	86	85	84	85	1	-1	81	86	83	84	1	3	86	86	86	89	3	3
Hubert	70	83	77	75	-2	5	75	72	86	80	-6	5	75	69	82	81	-1	6
Mercer	66	82	79	79	0	13	83	79	83	79	-4	-4	89	87	86	86	0	-3
Myers	73	84	85	89	4	16	87	73	83	88	5	1	77	87	92	90	-2	13
Oglethorpe	93	95	99	96	-3	3	91	98	97	99	2	8	98	96	99	99	0	1
Southwest	76	80	100	87	-13	11	82	80	86	92	6	10	88	91	90	91	1	3
West Chatham	83	84	88	85	-3	2	93	85	90	83	-7	-10	86	87	87	85	-2	-1

  Indicates an increase    
   At/above 2012 DAS target (grade 8)

## Percentage of Students Meeting/Exceeding Standard on the CRCT: Elementary Grades Mathematics

	Grade 3						Grade 4						Grade 5					
	2008	2009	2010	2011	1 Yr Chg	4 Yr Chg	2008	2009	2010	2011	1 Yr Chg	4 Yr Chg	2008	2009	2010	2011	1 Yr Chg	4 Yr Chg
<b>State</b>	71	78	80	81	1	10	70	74	77	81	4	11	72	79	82	87	5	15
<b>Comp Grp</b>	62	69	70	71	1	9	60	65	66	70	4	10	64	72	73	78	5	14
<b>SCCPSS</b>	59	69	73	73	0	14	58	66	68	74	6	16	60	72	75	83	8	23

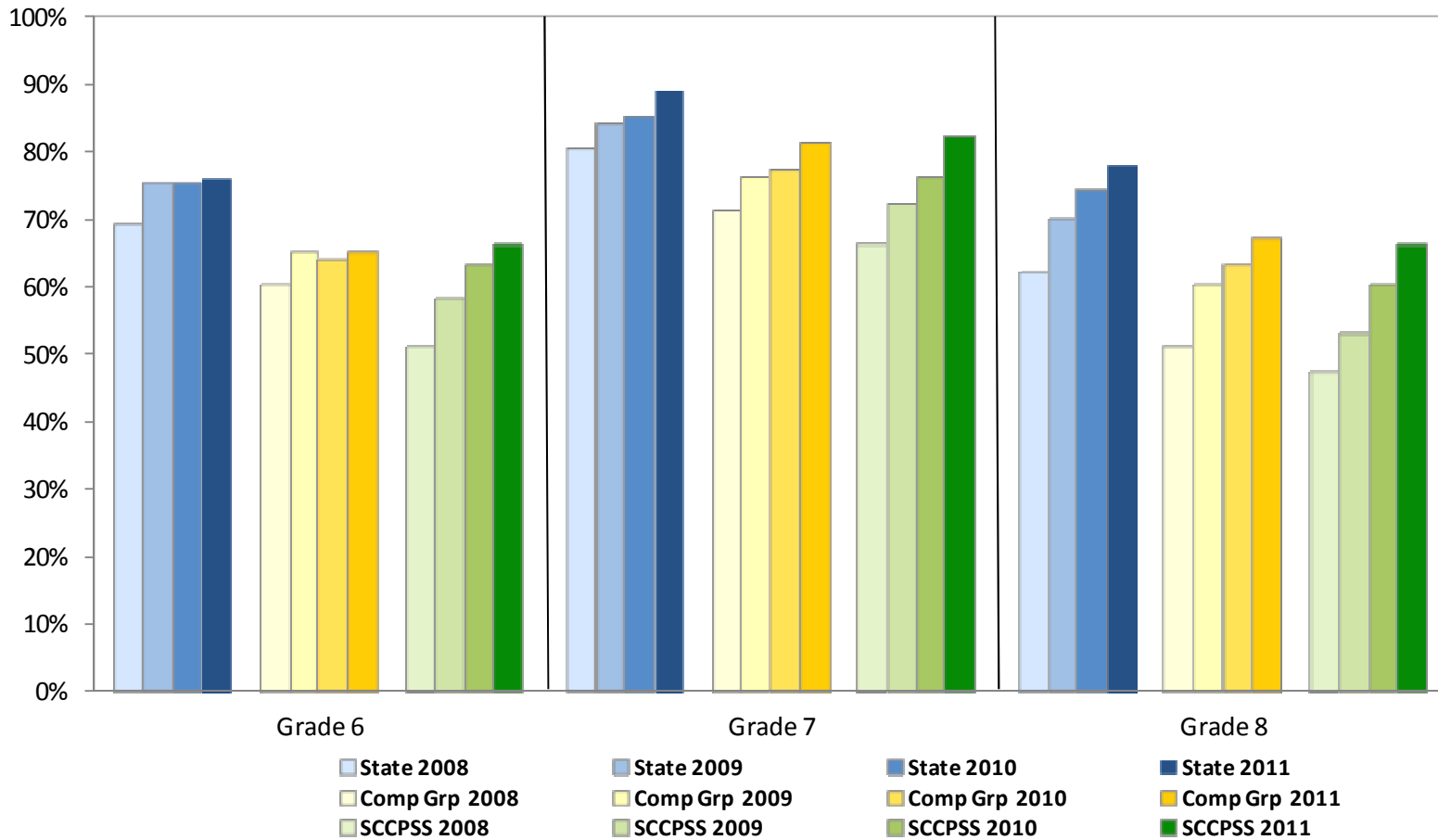
  Indicates an increase     
   At/above 2012 DAS target (grades 3 & 5)



## Percentage of Students Meeting/Exceeding Standard on the CRCT: Middle Grades Mathematics

	Grade 6						Grade 7						Grade 8					
	2008	2009	2010	2011	1 Yr Chg	4 Yr Chg	2008	2009	2010	2011	1 Yr Chg	4 Yr Chg	2008	2009	2010	2011	1 Yr Chg	4 Yr Chg
<b>State</b>	69	75	75	76	1	7	80	84	85	89	4	9	62	70	74	78	4	16
<b>Comp Grp</b>	60	65	64	65	1	5	71	76	77	81	4	10	51	60	63	67	4	16
<b>SCCPSS</b>	51	58	63	66	3	15	66	72	76	82	6	16	47	53	60	66	6	19

  Indicates an increase     
   At/above 2012 DAS target (grade 8)



## Percentage of Students Meeting/Exceeding Standard on the CRCT: Elementary School Mathematics

	Grade 3						Grade 4						Grade 5					
	2008	2009	2010	2011	1 Yr Chg	4 Yr Chg	2008	2009	2010	2011	1 Yr Chg	4 Yr Chg	2008	2009	2010	2011	1 Yr Chg	4 Yr Chg
<b>State</b>	71	78	80	81	1	10	70	74	77	81	4	11	72	79	82	87	5	15
<b>Comp Grp</b>	62	69	70	71	1	9	60	65	66	70	4	10	64	72	73	78	5	14
<b>SCCPSS</b>	59	69	73	73	0	14	58	66	68	74	6	16	60	72	75	83	8	23
Bartow	51	66	63	65	2	14	42	55	46	60	14	18	68	61	61	59	-2	-9
Bloomington	75	66	72	75	3	0	73	73	74	72	-2	-1	69	61	64	83	19	14
Butler	40	47	66	66	0	26	33	36	50	72	22	39	45	78	71	91	20	46
Gadsden	47	71	80	65	-15	18	34	52	67	59	-8	25	64	70	74	77	3	13
Garden City	45	59	75	58	-17	13	43	46	60	74	14	31	32	60	67	71	4	39
Gould	49	64	68	67	-1	18	62	65	64	66	2	4	38	68	65	86	21	48
Haven	39	67	72	61	-11	22	41	38	62	68	6	27	27	34	67	70	3	43
Heard	71	77	75	86	11	15	71	71	73	77	4	6	68	75	61	90	29	22
Hodge	38	61	66	76	10	38	62	74	63	59	-4	-3	58	61	63	83	20	25
Howard	86	89	86	84	-2	-2	80	94	85	91	6	11	82	93	92	96	4	14
Largo-Tibet	56	73	77	73	-4	17	53	55	67	77	10	24	57	79	72	85	13	28
Low	38	60	67	78	11	40	39	46	43	62	19	23	54	72	71	90	19	36
Marshpoint	85	87	87	90	3	5	86	88	91	95	4	9	90	95	97	96	-1	6
Pooler	75	82	81	84	3	9	82	83	75	64	-11	-18	84	78	78	83	5	-1
Pt. Wentworth	58	60	73	73	0	15	53	56	71	72	1	19	34	60	73	93	20	59
Pulaski	67	65	73	79	6	12	62	56	59	76	17	14	66	62	84	85	1	19
J. G. Smith	71	86	92	90	-2	19	71	87	93	96	3	25	77	81	81	91	10	14
Shuman	na	na	na	53	na	na	na	na	na	66	na	na	na	na	na	77	na	na
Southwest	51	77	61	79	18	28	57	69	77	77	0	20	50	77	84	90	6	40
Spencer	38	52	59	63	4	25	35	53	45	67	22	32	30	65	82	70	-12	40
Thunderbolt	45	70	64	72	8	27	42	58	60	57	-3	15	58	53	61	84	23	26
West Chatham	76	72	80	77	-3	1	69	72	63	71	8	2	63	67	74	70	-4	7
White Bluff	54	70	76	50	-26	-4	53	66	75	66	-9	13	54	75	85	81	-4	27
Windsor Forest	76	77	91	77	-14	1	59	74	74	76	2	17	61	87	84	92	8	31

█ Indicates an increase

█ At/above 2012 DAS target (grades 3 & 5)

na indicates new or reconfigured school



## Percentage of Students Meeting/Exceeding Standard on the CRCT: K-8 School Mathematics

	Grade 3						Grade 4						Grade 5					
	2008	2009	2010	2011	1 Yr Chg	4 Yr Chg	2008	2009	2010	2011	1 Yr Chg	4 Yr Chg	2008	2009	2010	2011	1 Yr Chg	4 Yr Chg
<b>State</b>	71	78	80	81	1	10	70	74	77	81	4	11	72	79	82	87	5	15
<b>Comp Grp</b>	62	69	70	71	1	9	60	65	66	70	4	10	64	72	73	78	5	14
<b>SCCPSS</b>	59	69	73	73	0	14	58	66	68	74	6	16	60	72	75	83	8	23
East Broad	24	46	45	47	2	23	24	46	45	41	-4	17	64	60	59	77	18	13
Ellis	74	74	78	87	9	13	74	74	78	77	-1	3	45	70	84	94	10	49
Garrison	na	na	na	91	na	na	na	na	na	93	na	na	na	na	na	98	na	na
Georgetown	70	64	68	82	14	12	70	64	68	80	12	10	73	73	77	82	5	9
Godley Station	na	na	na	78	na	na	na	na	na	85	na	na	na	na	na	82	na	na
Hesse	88	90	89	85	-4	-3	88	90	89	89	0	1	77	82	87	90	3	13
Isle of Hope	61	71	71	72	1	11	61	71	71	74	3	13	65	64	60	74	14	9

	Grade 6						Grade 7						Grade 8					
	2008	2009	2010	2011	1 Yr Chg	4 Yr Chg	2008	2009	2010	2011	1 Yr Chg	4 Yr Chg	2008	2009	2010	2011	1 Yr Chg	4 Yr Chg
<b>State</b>	69	75	75	76	1	7	80	84	85	89	4	9	62	70	74	78	4	16
<b>Comp Grp</b>	60	65	64	65	1	5	71	76	77	81	4	10	51	60	63	67	4	16
<b>SCCPSS</b>	51	58	63	66	3	15	66	72	76	82	6	16	47	53	60	66	6	19
East Broad	na	na	na	58	na	na	na	na	na	na	na	na	na	na	na	na	na	na
Ellis	50	78	93	81	-12	31	86	76	91	98	7	12	52	64	63	79	16	27
Garrison	na	na	na	98	na	na	na	na	na	99	na	na	na	na	na	100	na	na
Georgetown	na	na	na	80	na	na	na	na	na	na	na	na	na	na	na	na	na	na
Godley Station	na	na	na	74	na	na	na	na	na	87	na	na	na	na	na	70	na	na
Hesse	na	81	82	78	-4	na	na	na	85	88	3	na	na	na	na	66	na	na
Isle of Hope	na	na	61	69	8	na	na	na	na	93	na	na	na	na	na	na	na	na

■ Indicates an increase

■ At/above 2012 DAS target (grades 3, 5, & 8)

na indicates new or reconfigured school

## Percentage of Students Meeting/Exceeding Standard on the CRCT: Middle School Mathematics

	Grade 6						Grade 7						Grade 8					
	2008	2009	2010	2011	1 Yr Chg	4 Yr Chg	2008	2009	2010	2011	1 Yr Chg	4 Yr Chg	2008	2009	2010	2011	1 Yr Chg	4 Yr Chg
<b>State</b>	69	75	75	76	1	7	80	84	85	89	4	9	62	70	74	78	4	16
<b>Comp Grp</b>	60	65	64	65	1	5	71	76	77	81	4	10	51	60	63	67	4	16
<b>SCCPSS</b>	51	58	63	66	3	15	66	72	76	82	6	16	47	53	60	66	6	19
Bartlett	41	51	51	62	11	21	67	64	66	83	17	16	30	39	39	53	14	23
Coastal	66	70	80	82	2	16	75	84	84	93	9	18	57	64	79	80	1	23
DeRenne	61	60	60	59	-1	-2	65	70	73	76	3	11	53	48	59	53	-6	0
Hubert	26	30	46	42	-4	16	49	65	65	72	7	23	28	20	46	58	12	30
Mercer	35	49	49	47	-2	12	58	60	69	63	-6	5	39	47	44	54	10	15
Myers	48	51	51	63	12	15	69	65	65	76	11	7	37	46	54	76	22	39
Oglethorpe	77	79	87	80	-7	3	83	96	94	98	4	15	79	85	94	92	-2	13
Southwest	35	50	83	66	-17	31	57	69	82	88	6	31	52	61	62	68	6	16
West Chatham	57	58	60	62	2	5	76	72	77	82	5	6	48	51	50	61	11	13

Indicates an increase     
  At/above 2012 DAS target (grade 8)

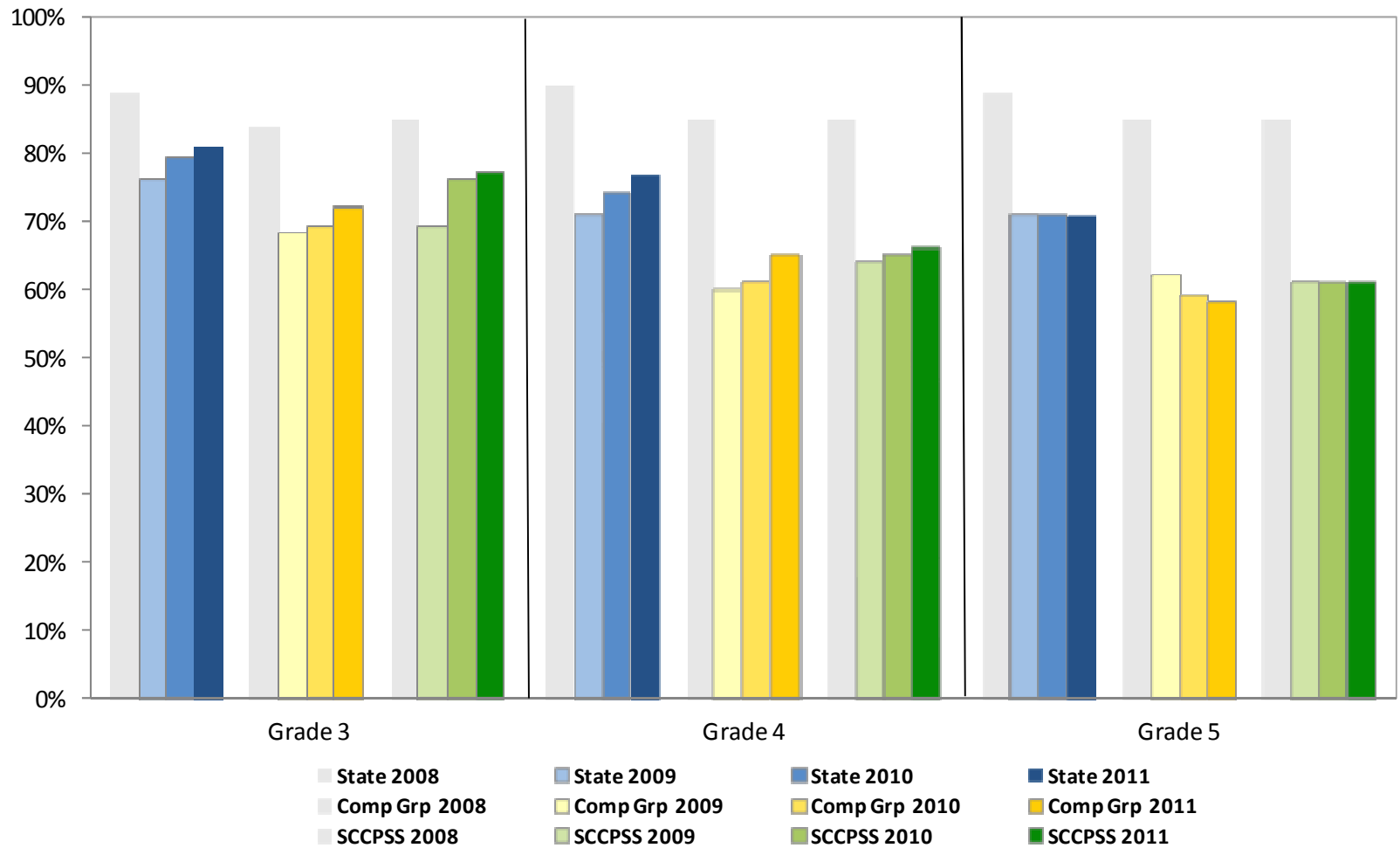
## Percentage of Students Meeting/Exceeding Standard on the CRCT: Elementary Grades Social Studies

	Grade 3						Grade 4						Grade 5					
	2008*	2009	2010	2011	1 Yr Chg	4 Yr Chg	2008*	2009	2010	2011	1 Yr Chg	4 Yr Chg	2008*	2009	2010	2011	1 Yr Chg	4 Yr Chg
<b>State</b>	89	76	79	81	2	na	90	71	74	77	3	na	89	71	71	71	0	na
<b>Comp Grp</b>	84	68	69	72	3	na	85	60	61	65	4	na	85	62	59	58	-1	na
<b>SCCPSS</b>	85	69	76	77	1	na	85	64	65	66	1	na	85	61	61	61	0	na

Indicates an increase

At/above 2012 DAS target (grades 3 & 5)

\*2008 data not comparable to subsequent years due to GPS transition; 4 Yr Chg not reported (na)

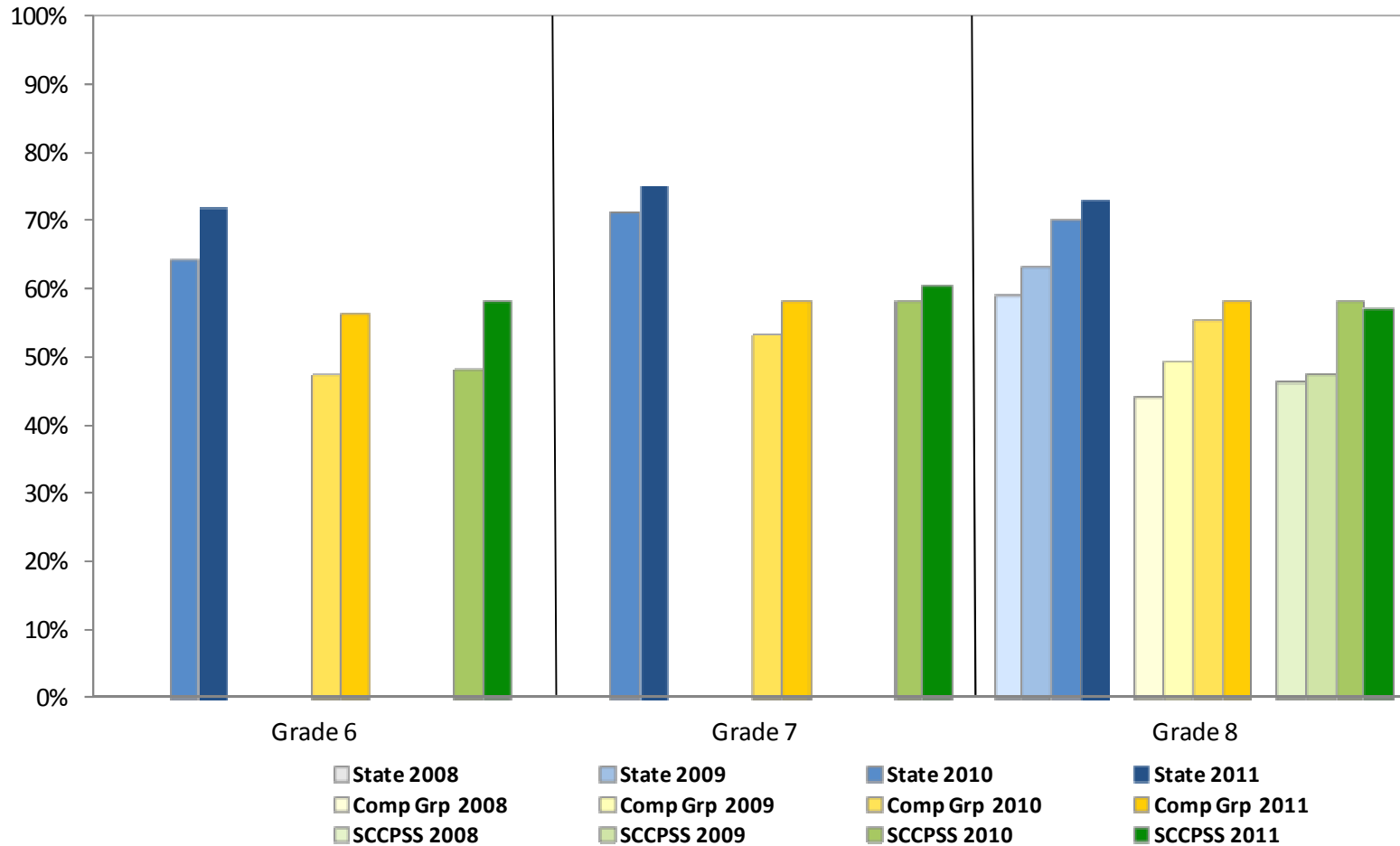


## Percentage of Students Meeting/Exceeding Standard on the CRCT: Middle Grades Social Studies

	Grade 6						Grade 7						Grade 8					
	2008	2009	2010	2011	1 Yr Chg	4 Yr Chg	2008	2009	2010	2011	1 Yr Chg	4 Yr Chg	2008	2009	2010	2011	1 Yr Chg	4 Yr Chg
<b>State</b>	na	na	64	72	8	na	na	na	71	75	4	na	59	63	70	73	3	14
<b>Comp Grp</b>	na	na	47	56	9	na	na	na	53	58	5	na	44	49	55	58	3	14
<b>SCCPSS</b>	na	na	48	58	10	na	na	na	58	60	2	na	46	47	58	57	-1	11

  Indicates an increase     
   At/above 2012 DAS target (grade 8)

2008 Grade 6 & 7 - Scores invalidated statewide by GADOE      2009 Grade 6 & 7 - Field test; no scores provided by GADOE.



## Percentage of Students Meeting/Exceeding Standard on the CRCT: Elementary School Social Studies

	Grade 3						Grade 4						Grade 5					
	2008*	2009	2010	2011	1 Yr Chg	4 Yr Chg	2008*	2009	2010	2011	1 Yr Chg	4 Yr Chg	2008*	2009	2010	2011	1 Yr Chg	4 Yr Chg
<b>State</b>	89	76	79	81	2	na	90	71	74	77	3	na	89	71	71	71	0	na
<b>Comp Grp</b>	84	68	69	72	3	na	85	60	61	65	4	na	85	62	59	58	-1	na
<b>SCCPSS</b>	85	69	76	77	1	na	85	64	65	66	1	na	85	61	61	61	0	na
Bartow	79	63	51	47	-4	na	70	52	35	34	-1	na	83	40	35	32	-3	na
Bloomingtondale	97	59	82	75	-7	na	97	64	71	64	-7	na	92	69	59	51	-8	na
Butler	79	54	68	73	5	na	67	36	40	57	17	na	70	41	48	56	8	na
Gadsden	81	79	75	61	-14	na	75	45	55	34	-21	na	84	57	38	46	8	na
Garden City	70	61	75	72	-3	na	72	52	51	66	15	na	71	39	47	45	-2	na
Gould	84	59	76	76	0	na	85	59	66	67	1	na	81	74	71	68	-3	na
Haven	80	62	81	67	-14	na	73	40	51	54	3	na	69	21	37	34	-3	na
Heard	95	65	81	89	8	na	95	65	64	89	25	na	93	80	71	81	10	na
Hodge	81	77	72	73	1	na	87	82	65	29	-36	na	82	35	29	44	15	na
Howard	97	87	96	93	-3	na	96	95	96	96	0	na	97	94	91	87	-4	na
Largo-Tibet	90	77	69	77	8	na	89	64	68	63	-5	na	84	61	64	67	3	na
Low	69	54	67	61	-6	na	76	47	43	49	6	na	75	46	49	56	7	na
Marshpoint	96	87	94	93	-1	na	97	88	91	93	2	na	97	89	90	90	0	na
Pooler	94	78	81	94	13	na	98	85	81	63	-18	na	91	65	74	79	5	na
Pt. Wentworth	82	69	80	73	-7	na	86	60	66	67	1	na	74	64	61	68	7	na
Pulaski	92	78	85	89	4	na	82	69	56	78	22	na	91	55	48	53	5	na
J. G. Smith	90	93	93	98	5	na	95	92	92	91	-1	na	95	75	86	78	-8	na
Shuman	na	na	na	67	na	na	na	na	na	57	na	na	na	na	na	44	na	na
Southwest	86	72	70	75	5	na	80	73	69	59	-10	na	89	68	72	50	-22	na
Spencer	77	37	45	58	13	na	73	27	53	45	-8	na	70	37	48	33	-15	na
Thunderbolt	84	79	75	80	5	na	77	53	63	40	-23	na	78	40	33	57	24	na
West Chatham	93	77	85	87	2	na	94	77	66	75	9	na	92	61	67	69	2	na
White Bluff	77	55	74	68	-6	na	86	55	62	51	-11	na	84	62	52	62	10	na
Windsor Forest	97	64	87	76	-11	na	93	66	61	73	12	na	85	74	67	70	3	na

\*2008 not comparable to subsequent years due to GPS transition; 4 Yr Chg not reported (na)

■ Indicates an increase

■ At/above 2012 DAS target (grades 3 & 5)

na indicates new or reconfigured school

## Percentage of Students Meeting/Exceeding Standard on the CRCT: K-8 School Social Studies

	Grade 3						Grade 4						Grade 5					
	2008*	2009	2010	2011	1 Yr Chg	4 Yr Chg	2008*	2009	2010	2011	1 Yr Chg	4 Yr Chg	2008*	2009	2010	2011	1 Yr Chg	4 Yr Chg
<b>State</b>	89	76	79	81	2	na	90	71	74	77	3	na	89	71	71	71	0	na
<b>Comp Grp</b>	84	68	69	72	3	na	85	60	61	65	4	na	85	62	59	58	-1	na
<b>SCCPSS</b>	85	69	76	77	1	na	85	64	65	66	1	na	85	61	61	61	0	na
East Broad	63	41	49	54	5	na	77	36	60	44	-16	na	79	42	53	40	-13	na
Ellis	89	72	85	88	3	na	93	60	67	74	7	na	92	86	67	66	-1	na
Garrison	na	na	na	100	na	na	72	32	37	94	na	na	na	na	na	93	na	na
Georgetown	92	66	82	89	7	na	88	76	71	76	5	na	85	58	69	72	3	na
Godley Station	na	na	na	86	na	na	na	na	na	85	na	na	na	na	na	71	na	na
Hesse	94	91	82	86	4	na	92	80	85	88	3	na	88	76	78	78	0	na
Isle of Hope	92	70	84	91	7	na	89	76	55	65	10	na	100	83	70	63	-7	na

	Grade 6						Grade 7						Grade 8					
	2008	2009	2010	2011	1 Yr Chg	4 Yr Chg	2008	2009	2010	2011	1 Yr Chg	4 Yr Chg	2008	2009	2010	2011	1 Yr Chg	4 Yr Chg
<b>State</b>	na	na	64	72	8	na	na	na	71	75	4	na	59	63	70	73	3	14
<b>Comp Grp</b>	na	na	47	56	9	na	na	na	53	58	5	na	44	49	55	58	3	14
<b>SCCPSS</b>	na	na	48	58	10	na	na	na	58	60	2	na	46	47	58	57	-1	11
East Broad	na	na	na	54	na	na	na	na	na	na	na	na	na	na	na	na	na	na
Ellis	na	na	91	87	-4	na	na	na	87	93	6	na	76	75	80	91	11	15
Garrison	na	na	na	94	na	na	na	na	na	90	na	na	na	na	na	96	na	na
Georgetown	na	na	na	87	na	na	na	na	na	na	na	na	na	na	na	na	na	na
Godley Station	na	na	na	78	na	na	na	na	na	77	na	na	na	na	na	39	na	na
Hesse	na	na	60	67	7	na	na	na	68	65	-3	na	na	na	na	76	na	na
Isle of Hope	na	na	50	59	9	na	na	na	na	62	na	na	na	na	na	na	na	na

\*2008 not comparable to subsequent years due to GPS transition; 4 Yr Chg not reported (na)

2008 Grade 6 & 7 - Scores invalidated statewide by GADOE      2009 Grade 6 & 7 - Field test; no scores provided by GADOE.

Indicates an increase     
  At/above 2012 DAS target (grades 3, 5, & 8)     
 na indicates new or reconfigured school

## Percentage of Students Meeting/Exceeding Standard on the CRCT: Middle School Social Studies

	Grade 6						Grade 7						Grade 8					
	2008	2009	2010	2011	1 Yr Chg	4 Yr Chg	2008	2009	2010	2011	1 Yr Chg	4 Yr Chg	2008	2009	2010	2011	1 Yr Chg	4 Yr Chg
<b>State</b>	na	na	64	72	8	na	na	na	71	75	4	na	59	63	70	73	3	14
<b>Comp Grp</b>	na	na	47	56	9	na	na	na	53	58	5	na	44	49	55	58	3	14
<b>SCCPSS</b>	na	na	48	58	10	na	na	na	58	60	2	na	46	47	58	57	-1	11
Bartlett	na	na	32	52	20	na	na	na	42	68	26	na	37	31	43	53	10	16
Coastal	na	na	69	81	12	na	na	na	72	84	12	na	53	69	74	82	8	29
DeRenne	na	na	40	30	-10	na	na	na	52	41	-11	na	52	47	57	44	-13	-8
Hubert	na	na	31	40	9	na	na	na	69	39	-30	na	38	7	26	35	9	-3
Mercer	na	na	37	43	6	na	na	na	51	38	-13	na	50	39	50	47	-3	-3
Myers	na	na	44	33	-11	na	na	na	32	43	11	na	37	63	82	56	-26	19
Oglethorpe	na	na	82	80	-2	na	na	na	82	90	8	na	70	66	84	86	2	16
Southwest	na	na	89	72	-17	na	na	na	61	61	0	na	48	54	49	54	5	6
West Chatham	na	na	43	49	6	na	na	na	58	59	1	na	42	40	48	52	4	10

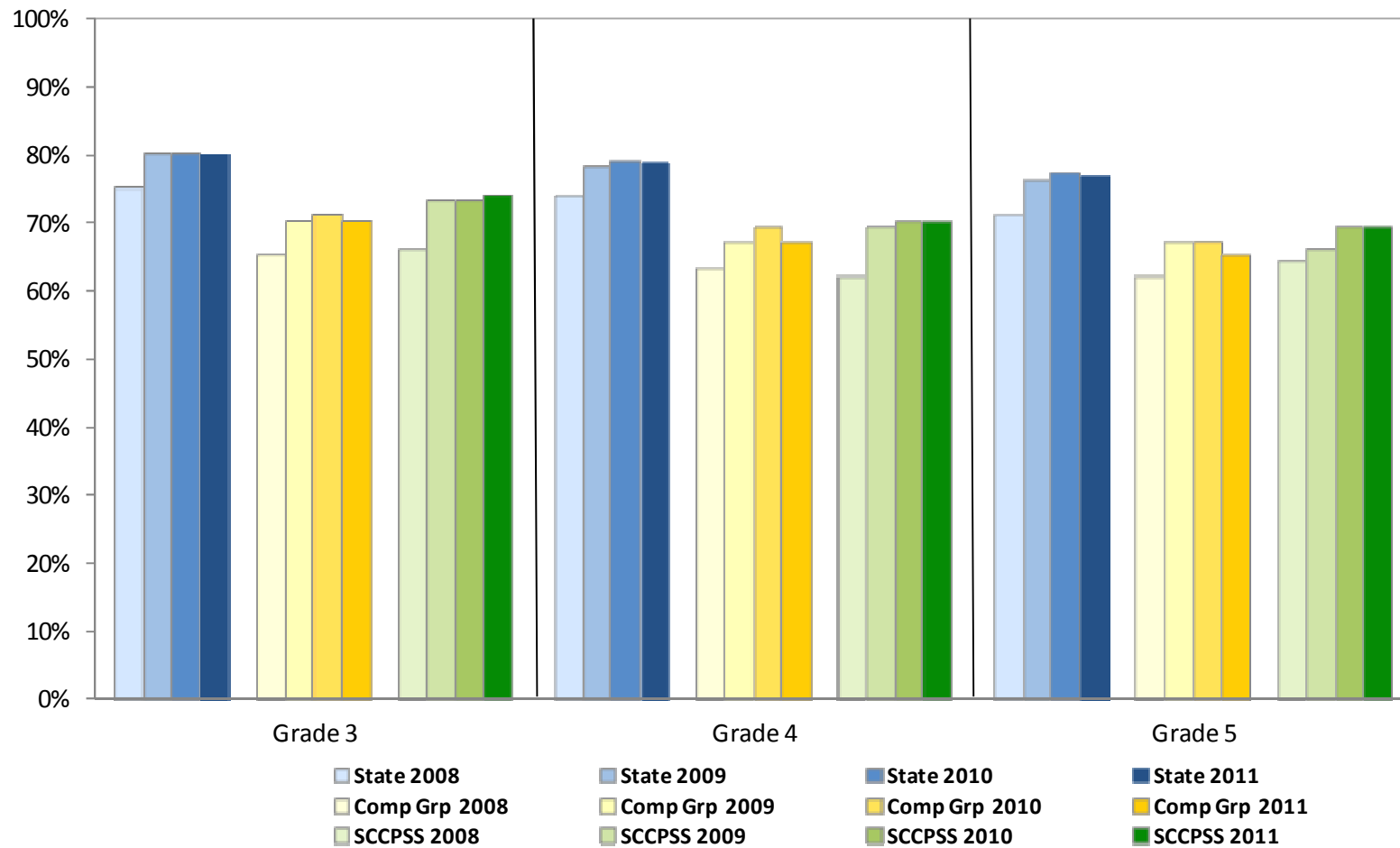
2008 Grade 6 & 7 - Scores invalidated statewide by GADOE      2009 Grade 6 & 7 - Field test; no scores provided by GADOE.

Indicates an increase     
  At/above 2012 DAS target (grade 8)

## Percentage of Students Meeting/Exceeding Standard on the CRCT: Elementary Grades Science

	Grade 3						Grade 4						Grade 5					
	2008	2009	2010	2011	1 Yr Chg	4 Yr Chg	2008	2009	2010	2011	1 Yr Chg	4 Yr Chg	2008	2009	2010	2011	1 Yr Chg	4 Yr Chg
<b>State</b>	75	80	80	80	0	5	74	78	79	79	0	5	71	76	77	77	0	6
<b>Comp Grp</b>	65	70	71	70	-1	5	63	67	69	67	-2	4	62	67	67	65	-2	3
<b>SCCPSS</b>	66	73	73	74	1	8	62	69	70	70	0	8	64	66	69	69	0	5

Indicates an increase     
  At/above 2012 DAS target (grades 3 & 5)

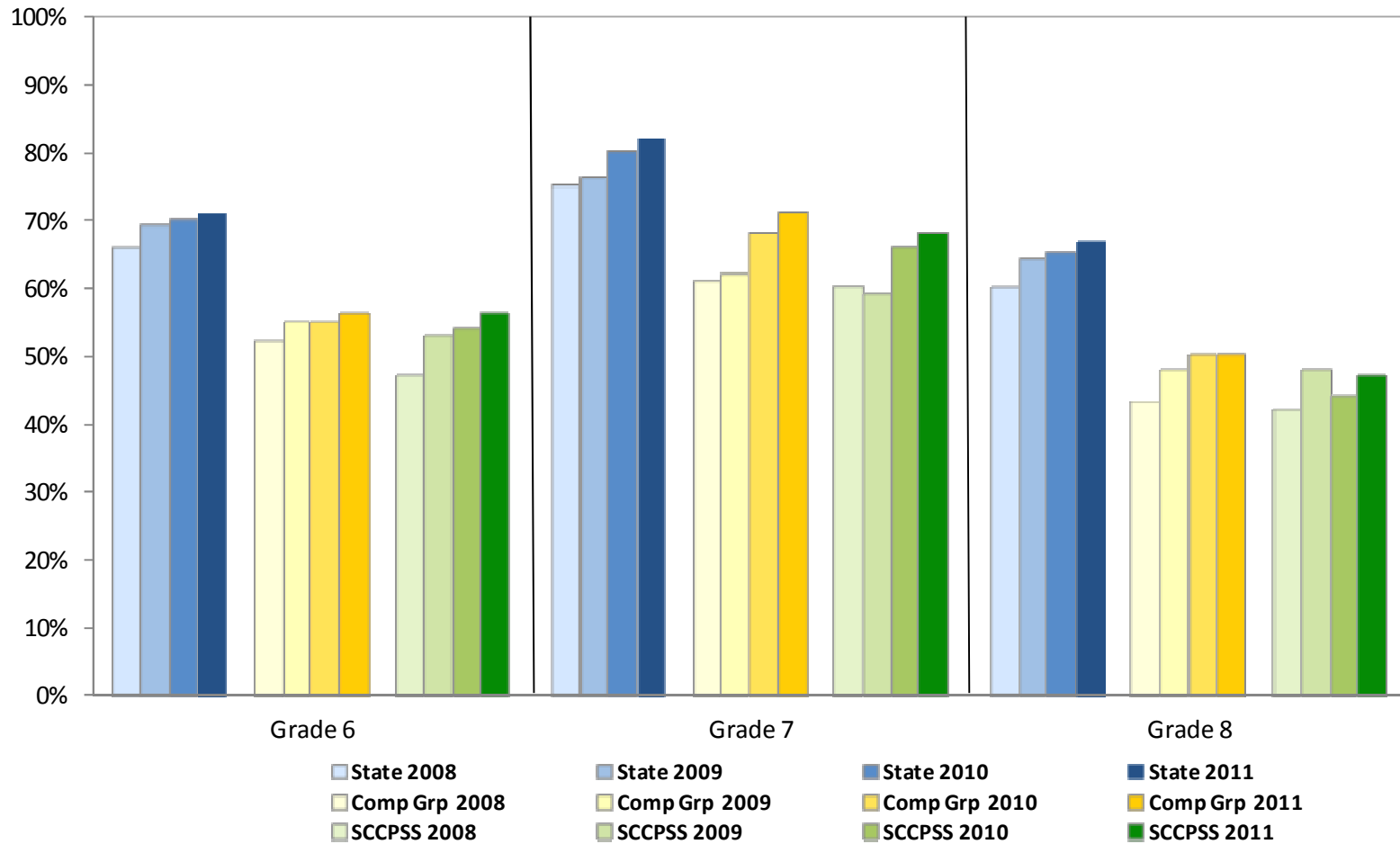




## Percentage of Students Meeting/Exceeding Standard on the CRCT: Middle Grades Science

	Grade 6						Grade 7						Grade 8					
	2008	2009	2010	2011	1 Yr Chg	4 Yr Chg	2008	2009	2010	2011	1 Yr Chg	4 Yr Chg	2008	2009	2010	2011	1 Yr Chg	4 Yr Chg
<b>State</b>	66	69	70	71	1	5	75	76	80	82	2	7	60	64	65	67	2	7
<b>Comp Grp</b>	52	55	55	56	1	4	61	62	68	71	3	10	43	48	50	50	0	7
<b>SCCPSS</b>	47	53	54	56	2	9	60	59	66	68	2	8	42	48	44	47	3	5

Indicates an increase     
  At/above 2012 DAS target (grade 8)



## Percentage of Students Meeting/Exceeding Standard on the CRCT: Elementary School Science

	Grade 3						Grade 4						Grade 5					
	2008	2009	2010	2011	1 Yr Chg	4 Yr Chg	2008	2009	2010	2011	1 Yr Chg	4 Yr Chg	2008	2009	2010	2011	1 Yr Chg	4 Yr Chg
<b>State</b>	75	80	80	80	0	5	74	78	79	79	0	5	71	76	77	77	0	6
<b>Comp Grp</b>	65	70	71	70	-1	5	63	67	69	67	-2	4	62	67	67	65	-2	3
<b>SCCPSS</b>	66	73	73	74	1	8	62	69	70	70	0	8	64	66	69	69	0	5
Bartow	58	55	63	46	-17	-12	48	64	51	37	-14	-11	64	55	56	36	-20	-28
Bloomingtondale	82	73	83	79	-4	-3	80	74	85	77	-8	-3	80	76	70	68	-2	-12
Butler	44	48	62	71	9	27	29	40	45	65	20	36	43	52	62	68	6	25
Gadsden	53	74	68	61	-7	8	25	59	61	47	-14	22	70	54	62	67	5	-3
Garden City	53	64	68	54	-14	1	39	61	61	63	2	24	36	47	63	56	-7	20
Gould	56	78	75	69	-6	13	63	64	67	67	0	4	64	75	71	67	-4	3
Haven	52	64	63	70	7	18	41	52	58	55	-3	14	35	18	39	49	10	14
Heard	79	73	75	91	16	12	84	72	70	85	15	1	73	72	77	86	9	13
Hodge	55	77	64	66	2	11	66	82	79	45	-34	-21	69	46	63	58	-5	-11
Howard	92	96	96	94	-2	2	92	95	94	94	0	2	85	95	96	92	-4	7
Largo-Tibet	73	87	68	70	2	-3	68	64	68	60	-8	-8	57	60	67	63	-4	6
Low	42	52	60	60	0	18	46	45	48	59	11	13	48	49	55	70	15	22
Marshpoint	91	92	93	91	-2	0	87	92	94	95	1	8	85	87	87	91	4	6
Pooler	88	89	82	88	6	0	90	93	83	65	-18	-25	75	79	80	81	1	6
Pt. Wentworth	58	77	82	76	-6	18	56	68	70	68	-2	12	61	56	61	62	1	1
Pulaski	71	70	80	86	6	15	58	58	66	84	18	26	54	60	58	64	6	10
J. G. Smith	74	90	85	86	1	12	78	87	98	93	-5	15	85	80	83	84	1	-1
Shuman	na	na	na	56	na	na	na	na	na	55	na	na	na	na	na	54	na	na
Southwest	72	71	65	71	6	-1	57	67	71	62	-9	5	60	68	68	75	7	15
Spencer	56	58	49	70	21	14	37	70	65	55	-10	18	33	69	59	49	-10	16
Thunderbolt	59	80	71	68	-3	9	38	54	65	43	-22	5	58	40	50	70	20	12
West Chatham	86	84	83	87	4	1	72	84	75	80	5	8	76	71	70	72	2	-4
White Bluff	52	68	65	59	-6	7	63	53	58	49	-9	-14	52	67	62	66	4	14
Windsor Forest	82	74	88	83	-5	1	61	73	61	77	16	16	63	82	79	74	-5	11

Indicates an increase

At/above 2012 DAS target (grades 3 & 5)

na indicates new or reconfigured school

## Percentage of Students Meeting/Exceeding Standard on the CRCT: K-8 School Science

	Grade 3						Grade 4						Grade 5					
	2008	2009	2010	2011	1 Yr Chg	4 Yr Chg	2008	2009	2010	2011	1 Yr Chg	4 Yr Chg	2008	2009	2010	2011	1 Yr Chg	4 Yr Chg
<b>State</b>	75	80	80	80	0	5	74	78	79	79	0	5	71	76	77	77	0	6
<b>Comp Grp</b>	65	70	71	70	-1	5	63	67	69	67	-2	4	62	67	67	65	-2	3
<b>SCCPSS</b>	66	73	73	74	1	8	62	69	70	70	0	8	64	66	69	69	0	5
East Broad	34	42	47	42	-5	8	62	34	57	50	-7	-12	54	49	59	49	-10	-5
Ellis	78	78	81	89	8	11	81	72	67	77	10	-4	73	88	74	63	-11	-10
Garrison	na	na	na	85	na	na	41	66	47	93	na	na	na	na	na	91	na	na
Georgetown	81	76	76	84	8	3	66	85	77	78	1	12	71	60	62	77	15	6
Godley Station	na	na	na	85	na	na	na	na	na	90	na	na	na	na	na	75	na	na
Hesse	90	92	86	87	1	-3	76	87	88	86	-2	10	74	82	82	83	1	9
Isle of Hope	76	75	80	79	-1	3	84	79	68	81	13	-3	95	92	85	86	1	-9

	Grade 6						Grade 7						Grade 8					
	2008	2009	2010	2011	1 Yr Chg	4 Yr Chg	2008	2009	2010	2011	1 Yr Chg	4 Yr Chg	2008	2009	2010	2011	1 Yr Chg	4 Yr Chg
<b>State</b>	66	69	70	71	1	5	75	76	80	82	2	7	60	64	65	67	2	7
<b>Comp Grp</b>	52	55	55	56	1	4	61	62	68	71	3	10	43	48	50	50	0	7
<b>SCCPSS</b>	47	53	54	56	2	9	60	59	66	68	2	8	42	48	44	47	3	5
East Broad	na	na	na	52	na	na	na	na	na	na	na	na	na	na	na	na	na	na
Ellis	69	63	86	75	-11	6	88	74	91	98	7	10	73	81	72	91	19	18
Garrison	na	na	na	96	na	na	na	na	na	95	na	na	na	na	na	83	na	na
Georgetown	na	na	na	80	na	na	na	na	na	na	na	na	na	na	na	na	na	na
Godley Station	na	na	na	71	na	na	na	na	na	79	na	na	na	na	na	48	na	na
Hesse	na	73	78	70	-8	na	na	na	81	81	0	na	na	na	na	54	na	na
Isle of Hope	na	na	74	64	-10	na	na	na	na	83	na	na	na	na	na	na	na	na

█ Indicates an increase

█ At/above 2012 DAS target (grades 3, 5, & 8)

na indicates new or reconfigured school

## Percentage of Students Meeting/Exceeding Standard on the CRCT: Middle School Science

	Grade 6						Grade 7						Grade 8					
	2008	2009	2010	2011	1 Yr Chg	4 Yr Chg	2008	2009	2010	2011	1 Yr Chg	4 Yr Chg	2008	2009	2010	2011	1 Yr Chg	4 Yr Chg
<b>State</b>	66	69	70	71	1	5	75	76	80	82	2	7	60	64	65	67	2	7
<b>Comp Grp</b>	52	55	55	56	1	4	61	62	68	71	3	10	43	48	50	50	0	7
<b>SCCPSS</b>	47	53	54	56	2	9	60	59	66	68	2	8	42	48	44	47	3	5
Bartlett	42	42	38	54	16	12	53	45	58	68	10	15	33	45	35	45	10	12
Coastal	64	69	68	82	14	18	73	76	75	84	9	11	56	57	58	67	9	11
DeRenne	54	50	52	42	-10	-12	59	57	62	56	-6	-3	48	52	44	32	-12	-16
Hubert	21	26	33	28	-5	7	43	45	63	51	-12	8	13	12	16	29	13	16
Mercer	36	49	43	34	-9	-2	54	51	64	47	-17	-7	41	35	36	28	-8	-13
Myers	34	45	41	40	-1	6	58	37	45	60	15	2	29	35	44	43	-1	14
Oglethorpe	73	72	78	67	-11	-6	81	90	86	91	5	10	68	73	69	73	4	5
Southwest	47	49	50	54	4	7	75	61	70	78	8	3	48	60	45	48	3	0
West Chatham	53	63	55	53	-2	0	56	57	62	62	0	6	42	52	40	45	5	3

  Indicates an increase    
   At/above 2012 DAS target (grade 8)

### Percentage of Students Meeting/Exceeding Standard on the CRCT: by Elementary Grades Subgroup

		Grade 3						Grade 4						Grade 5					
		2008	2009	2010	2011	1 Yr Chg	4 Yr Chg	2008	2009	2010	2011	1 Yr Chg	4 Yr Chg	2008	2009	2010	2011	1 Yr Chg	4 Yr Chg
<b>Reading</b>	Asian	96	87	100	94	-6	-2	95	98	*	97	*	2	94	96	*	92	*	*
	Black	75	79	83	83	0	8	77	79	81	78	-3	1	77	79	82	84	2	7
	Hispanic	93	89	94	91	-3	-2	84	90	92	88	-4	4	94	84	89	93	4	-1
	White	93	92	96	95	-1	2	90	95	95	93	-2	3	93	90	94	94	0	1
	Multiracial	90	91	97	85	-12	-5	89	91	92	88	-4	-1	89	90	98	86	-12	-3
	SWD***	60	59	74	74	0	14	58	60	69	57	-12	-1	56	58	64	66	2	10
<b>ELA</b>	Asian	100	91	100	95	-5	-5	93	100	*	97	*	4	94	94	*	95	*	*
	Black	77	79	80	81	1	4	75	79	80	79	-1	4	83	85	87	89	2	6
	Hispanic	89	90	87	90	3	1	78	86	87	86	-1	8	83	86	88	94	6	11
	White	91	89	92	93	1	2	89	90	93	91	-2	2	92	92	93	93	0	1
	Multiracial	93	91	95	84	-11	-9	85	91	85	84	-1	-1	87	93	98	91	-7	4
	SWD***	64	57	65	68	3	4	52	53	58	59	1	7	53	66	64	69	5	16
<b>Math</b>	Asian	87	84	91	92	1	5	89	93	*	95	*	6	86	96	*	88	*	*
	Black	48	62	67	65	-2	17	49	55	60	65	5	16	53	68	71	79	8	26
	Hispanic	75	77	72	78	6	3	67	76	79	77	-2	10	62	76	84	87	3	25
	White	79	82	83	85	2	6	75	85	84	86	2	11	75	79	82	91	9	16
	Multiracial	78	86	97	74	-23	-4	74	82	89	78	-11	4	62	79	95	85	-10	23
	SWD***	34	40	47	56	9	22	32	34	41	40	-1	8	28	44	43	64	21	36

■ Indicates an increase

■ At/above 2012 DAS target (grades 3, 5, & 8)

\* Not reported; < 10 students

\*\*\* 2011 results include CRCT-M

## Percentage of Students Meeting/Exceeding Standard on the CRCT: by Elementary Grades Subgroup

		Grade 3						Grade 4						Grade 5					
		2008**	2009	2010	2011	1 Yr Chg	4 Yr Chg	2008**	2009	2010	2011	1 Yr Chg	4 Yr Chg	2008**	2009	2010	2011	1 Yr Chg	4 Yr Chg
<b>Social Studies</b>	Asian	98	80	100	87	-13	na	100	89	*	92	*	na	92	88	*	85	*	*
	Black	81	62	69	71	2	na	80	52	55	53	-2	na	81	52	51	51	0	na
	Hispanic	94	76	80	82	2	na	89	77	68	77	9	na	89	65	76	67	-9	na
	White	94	81	88	88	0	na	94	86	85	86	1	na	94	77	79	82	3	na
	Multiracial	90	86	95	79	-16	na	89	78	81	76	-5	na	89	76	80	65	-15	na
	SWD	70	46	57	58	1	na	71	38	51	40	-11	na	63	39	36	35	-1	na
<b>Science</b>	Asian	93	87	91	91	0	-2	89	96	*	89	*	0	86	90	*	88	*	*
	Black	55	65	64	64	0	9	51	59	60	57	-3	6	54	57	60	59	-1	5
	Hispanic	84	85	81	81	0	-3	61	76	78	78	0	17	73	67	76	75	-1	2
	White	86	89	89	90	1	4	85	89	90	88	-2	3	82	83	85	88	3	6
	Multiracial	80	90	94	75	-19	-5	74	88	83	76	-7	2	78	83	92	71	-21	-7
	SWD	49	55	58	57	-1	8	46	43	52	44	-8	-2	35	45	45	39	-6	4

■ Indicates an increase

■ At/above 2012 DAS target (grades 3, 5, & 8)

\* Not reported; < 10 students

\*\* Social Studies data not comparable due to GPS transition

**Percentage of Students Meeting/Exceeding Standard on the CRCT: by Middle Grades Subgroup**

		Grade 6						Grade 7						Grade 8					
		2008	2009	2010	2011	1 Yr Chg	4 Yr Chg	2008	2009	2010	2011	1 Yr Chg	4 Yr Chg	2008	2009	2010	2011	1 Yr Chg	4 Yr Chg
<b>Reading</b>	Asian	96	88	*	98	*	2	95	87	*	93	*	-2	95	97	*	98	*	*
	Black	81	80	83	89	6	8	77	78	79	79	0	2	86	86	90	94	4	8
	Hispanic	89	89	85	92	7	3	69	79	83	88	5	19	86	83	87	87	0	1
	White	92	91	92	96	4	4	90	88	91	89	-2	-1	94	96	97	97	0	3
	Multiracial	95	89	96	93	-3	-2	92	87	87	88	1	-4	95	91	97	95	-2	0
	SWD***	52	48	60	68	8	16	46	45	50	56	6	10	57	59	67	73	6	16
<b>ELA</b>	Asian	92	88	*	98	*	6	93	96	*	96	*	3	91	100	*	98	*	*
	Black	76	82	85	85	0	9	83	81	85	86	1	3	84	85	88	88	0	4
	Hispanic	73	88	82	90	8	17	73	75	85	86	1	13	78	77	82	80	-2	2
	White	87	92	91	93	2	6	88	86	92	91	-1	3	91	93	94	94	0	3
	Multiracial	88	92	98	91	-7	3	92	92	91	88	-3	-4	93	89	98	94	-4	1
	SWD***	39	48	59	62	3	23	54	40	52	63	11	9	53	56	56	68	12	15
<b>Math</b>	Asian	85	82	*	96	*	11	86	98	*	93	*	7	84	85	*	92	*	*
	Black	44	50	55	56	1	12	62	68	71	78	7	16	41	46	54	60	6	19
	Hispanic	58	70	74	76	2	18	70	76	76	85	9	15	35	54	53	62	9	27
	White	68	77	79	81	2	13	76	83	86	89	3	13	66	71	76	77	1	11
	Multiracial	64	69	72	72	0	8	86	77	93	91	-2	5	53	57	85	76	-9	23
	SWD***	17	22	35	34	-1	17	40	38	38	64	26	24	11	19	27	50	23	39

Indicates an increase

At/above 2012 DAS target (grades 3, 5, & 8)

\* Not reported; < 10 students

\*\*\* 2011 results include CRCT-M

### Percentage of Students Meeting/Exceeding Standard on the CRCT: by Middle Grades Subgroup

		Grade 6						Grade 7						Grade 8					
		2008	2009	2010	2011	1 Yr Chg	4 Yr Chg	2008	2009	2010	2011	1 Yr Chg	4 Yr Chg	2008	2009	2010	2011	1 Yr Chg	4 Yr Chg
<b>Social Studies</b>	Asian			*	93	*	na			*	74	*	na	70	80	*	78	*	*
	Black			39	46	7	na			50	52	2	na	40	40	50	48	-2	8
	Hispanic			54	75	21	na			65	66	1	na	37	43	45	55	10	18
	White			65	74	9	na			75	76	1	na	67	66	76	75	-1	8
	Multiracial			75	66	-9	na			76	68	-8	na	42	56	86	67	-19	25
	SWD			20	28	8	na			26	38	12	na	23	23	34	25	-9	2
<b>Science</b>	Asian	76	73	*	96	*	20	77	81	*	87	*	10	76	77	*	69	*	*
	Black	37	42	43	42	-1	5	53	51	60	62	2	9	32	39	35	37	2	5
	Hispanic	52	69	63	75	12	23	60	65	75	67	-8	7	39	55	40	54	14	15
	White	71	76	78	78	0	7	76	79	82	81	-1	5	71	71	68	68	0	-3
	Multiracial	64	73	78	66	-12	2	76	74	75	78	3	2	54	61	70	65	-5	11
	SWD	19	22	30	28	-2	9	35	31	31	40	9	5	18	21	19	17	-2	-1

■ Indicates an increase

■ At/above 2012 DAS target (grades 3, 5, & 8)

\* Not reported; < 10 students

■ Social Studies data not reported in 2008 or 2009 due to statewide invalidation / field testing



### Percentage of Students Meeting/Exceeding Standard on the CRCT: by Elementary Grades Gender

		Grade 3						Grade 4						Grade 5					
		2008**	2009	2010	2011	1 Yr Chg	4 Yr Chg	2008**	2009	2010	2011	1 Yr Chg	4 Yr Chg	2008**	2009	2010	2011	1 Yr Chg	4 Yr Chg
		<b>Reading</b>	Female	85	86	90	90	0	5	86	88	88	87	-1	1	87	86	89	91
	Male	78	80	86	85	-1	7	77	82	83	81	-2	4	78	79	84	85	1	7
<b>ELA</b>	Female	87	86	88	89	1	2	84	88	89	88	-1	4	91	92	92	94	2	3
	Male	78	80	82	83	1	5	75	79	79	80	1	5	81	83	86	89	3	8
<b>Math</b>	Female	62	72	76	75	-1	13	60	67	69	74	5	14	63	75	78	85	7	22
	Male	56	67	70	71	1	15	56	65	67	73	6	17	58	69	72	81	9	23
<b>Social Studies</b>	Female	89	71	79	79	0	na	87	66	65	68	3	na	88	62	61	61	0	na
	Male	82	67	74	76	2	na	84	62	64	65	1	na	82	60	61	61	0	na
<b>Science</b>	Female	69	76	74	76	2	7	61	70	69	69	0	8	66	67	70	70	0	4
	Male	64	70	72	72	0	8	64	69	70	69	-1	5	62	64	67	68	1	6

  Indicates an increase     
   At/above 2012 DAS target (grades 3 & 5)

\*\* Social Studies data not comparable due to GPS transition

### Percentage of Students Meeting/Exceeding Standard on the CRCT: by Middle Grades Gender

		Grade 6						Grade 7						Grade 8					
		2008	2009	2010	2011	1 Yr Chg	4 Yr Chg	2008	2009	2010	2011	1 Yr Chg	4 Yr Chg	2008	2009	2010	2011	1 Yr Chg	4 Yr Chg
<b>Reading</b>	Female	89	88	90	93	3	4	84	87	87	87	0	3	91	91	95	96	1	5
	Male	81	79	81	89	8	8	76	76	78	78	0	2	86	85	89	93	4	7
<b>ELA</b>	Female	85	91	93	93	0	8	89	88	92	92	0	3	90	92	94	93	-1	3
	Male	74	80	81	83	2	9	79	78	83	84	1	5	81	83	85	87	2	6
<b>Math</b>	Female	54	60	66	68	2	14	71	76	79	85	6	14	50	55	64	67	3	17
	Male	49	57	59	64	5	15	62	69	73	79	6	17	45	51	58	64	6	19
<b>Social Studies</b>	Female			51	59	8	na			60	60	0	na	47	47	60	59	-1	12
	Male			44	56	12	na			55	61	6	na	46	46	55	54	-1	8
<b>Science</b>	Female	48	54	53	56	3	8	61	60	68	70	2	9	40	45	44	45	-1	5
	Male	47	53	55	57	2	10	59	58	64	67	3	8	44	51	45	49	-6	5

■ Indicates an increase

■ At/above 2012 DAS target (grade 8)

■ Social Studies data not reported in 2008 or 2009 due to statewide invalidation / field testing

**Percentage of Students Meeting/Exceeding Standard on the CRCT: With 2011 Retest**

