



Savannah Chatham County Public School System

Executive Summary Truancy (End of Year) School year 2011-2012

About Truancy

Any child subject to compulsory attendance who, during the school calendar year has more than five (5) days of unexcused absences is considered truant.

Per policy JBA, the following are excused absences: personal illness, serious illness or death of a student's immediate family member, observance of religious holidays, active duty military family leave, orders of governmental agencies, conditions rendering attendance impossible or hazardous to student health or safety, or participation in approved school activities.

An absence for any reason other than one defined above, would be considered unexcused. Compulsory attendance applies to a child between their sixth and sixteenth birthday.

The district objective is to improve attendance of all compulsory age students from the school year 2007-2008 baseline of 18.4% of truant students to less than 12% by 2014.

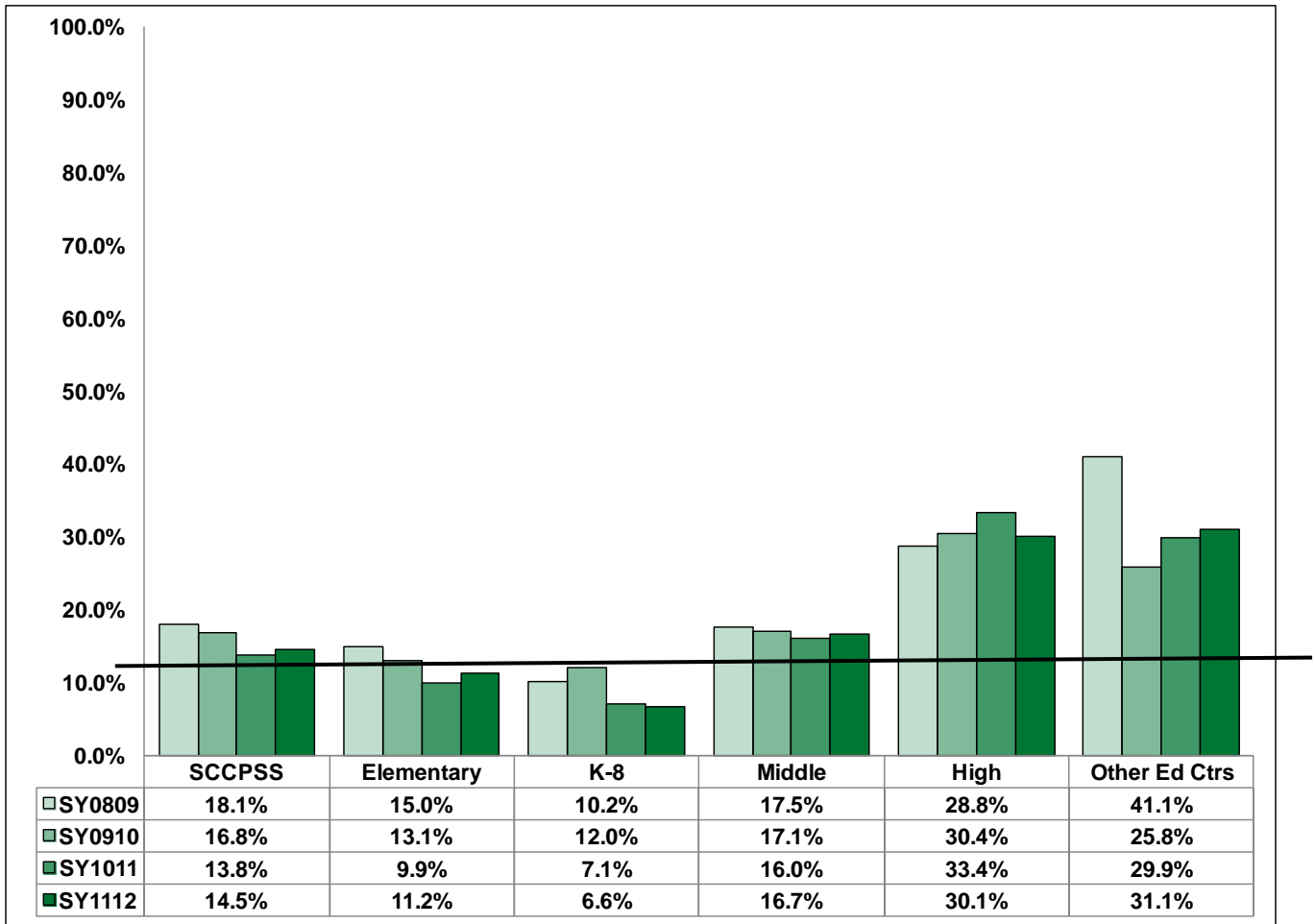
Highlights 2012 Truancy

- Truancy rates for K-8 and high schools experienced a decline relative to the previous year.
- The percent of truant students by ethnicity range from 6.3% for Asian students to 15.1% for Black students.

Actions 2012 Truancy

- Review and Update Truancy Reduction Protocol.
- Conduct collaborative truancy sweeps among The Savannah-Chatham County Public School System School Social Workers, School Resource Officers and The Savannah-Chatham Metropolitan Police Department.
- School social workers and school resource officers will conduct home visits during the first week of school to students who have not reported to school ("No-Shows").

Percentage of Truancy by Level



————— 2014 Target

Other Ed Ctrs include Coastal Academy, Scott, Corporate Academy, and Early College

Truancy Counts by School

Elementary Schools	2011-2012	2008-2009		2009-2010		2010-2011		2011-2012	
	Enrollment	Count	Pct.	Count	Pct.	Count	Pct.	Count	Pct.
Bartow	616	140	24.0%	76	14.5%	144	19.9%	81	13.1%
Bloomington	405	122	18.2%	69	11.9%	24	5.7%	57	14.1%
Butler	606	136	15.1%	125	17.9%	25	4.3%	51	8.4%
CEMCO	142	0	0.0%	8	16.3%	9	9.8%	5	3.5%
Gadsden	545	61	10.9%	38	7.9%	57	10.5%	57	10.5%
Garden City	684	148	25.3%	111	23.1%	136	21.7%	173	25.3%
Gould	767	167	23.5%	128	20.5%	97	12.3%	121	15.8%
Haven	448	70	17.1%	37	12.7%	56	12.7%	71	15.8%
Heard	455	105	13.8%	95	15.9%	35	7.6%	33	7.3%
Hodge	408	99	25.8%	73	25.0%	74	18.6%	73	17.9%
Howard	740	60	8.7%	52	8.6%	62	8.8%	42	5.7%
J. G. Smith	314	24	5.6%	24	7.2%	9	2.7%	11	3.5%
Largo-Tibet	700	89	14.3%	40	7.7%	37	5.9%	78	11.1%
Low	504	103	18.4%	86	17.0%	63	12.0%	63	12.5%
Marshpoint	819	103	10.8%	104	14.4%	33	4.2%	20	2.4%
Pooler	433	70	12.7%	81	16.9%	50	12.3%	55	12.7%
Pt. Wentworth	481	57	8.4%	46	7.1%	12	2.5%	12	2.5%
Pulaski	534	103	15.2%	60	12.1%	52	10.1%	56	10.5%
Shuman	755					85	12.3%	115	15.2%
Southwest	767	140	14.4%	64	8.4%	32	4.2%	70	9.1%
Spencer	475	43	11.3%	48	19.0%	2	0.4%	8	1.7%
Thunderbolt	384	136	27.1%	72	16.9%	28	8.0%	51	13.3%
West Chatham	716	182	17.2%	90	9.8%	29	4.1%	44	6.1%
White Bluff	619	71	10.3%	61	11.3%	55	8.9%	63	10.2%
Windsor Forest	623	79	15.8%	21	9.4%	67	11.8%	77	12.4%

K-8 Schools	2011-2012	2008-2009		2009-2010		2010-2011		2011-2012	
	Enrollment	Count	Pct.	Count	Pct.	Count	Pct.	Count	Pct.
East Broad	575	124	23.7%	83	20.8%	148	24.0%	71	12.3%
Ellis	461	83	15.6%	80	17.4%	33	7.2%	30	6.5%
Garrison	730	72	20.9%	74	22.0%	57	9.0%	22	3.0%
Georgetown	597	103	14.1%	51	8.6%	19	3.6%	22	3.7%
Godley Station	1461					26	2.1%	104	7.1%
Hesse	942	58	10.0%	100	16.5%	46	5.8%	88	9.3%
Isle of Hope	631	26	5.0%	7	1.4%	13	2.2%	20	3.2%

Enrollment/Student Count refers to compulsory and takes into account active and inactive students.

*Student count is defined per school and not by district; therefore, a student may count more than once at multiple sites.

 New School

Truancy Counts by School

Middle Schools	2011-2012	2008-2009		2009-2010		2010-2011		2011-2012	
	Enrollment	Count	Pct.	Count	Pct.	Count	Pct.	Count	Pct.
Bartlett	884	149	14.1%	140	25.0%	206	19.6%	188	21.3%
Coastal	768	134	11.3%	91	9.3%	123	16.0%	129	16.8%
DeRenne	812	135	11.6%	153	17.0%	185	23.1%	145	17.9%
Hubert	709	44	7.5%	20	4.4%	75	11.3%	54	7.6%
Mercer	741	95	7.6%	126	14.0%	137	17.9%	155	20.9%
Myers	637	166	16.2%	222	29.9%	78	11.7%	122	19.2%
Oglethorpe	428	35	7.7%	36	8.6%	22	5.2%	2	0.5%
Shuman		153	16.3%	67	15.3%				
Southwest	826	259	18.7%	244	22.2%	147	18.1%	181	21.9%
West Chatham	1152	228	15.8%	217	17.4%	126	10.8%	169	14.7%

High Schools	2011-2012	2008-2009		2009-2010		2010-2011		2011-2012	
	Enrollment	Count	Pct.	Count	Pct.	Count	Pct.	Count	Pct.
Beach	384	111	12.9%	182	43.0%	153	36.0%	79	20.6%
Groves	541	100	10.9%	148	21.6%	260	43.0%	183	33.8%
Islands	424					86	28.7%	112	26.4%
Jenkins	526	103	10.5%	95	15.7%	110	20.4%	137	26.0%
Johnson	381	230	21.5%	240	41.8%	142	32.9%	141	37.0%
Savannah Arts	343	29	6.7%	76	19.0%	164	46.5%	95	27.7%
SHS-School of Liberal Studies	242			171	48.3%	132	54.8%	119	49.2%
Windsor Forest	561	96	10.9%	148	23.9%	97	15.8%	165	29.4%
Woodville-Tompkins (9 th G)	89							17	19.1%


Other Educational Centers	2011-2012	2008-2009		2009-2010		2010-2011		2011-2012	
	Enrollment	Count	Pct.	Count	Pct.	Count	Pct.	Count	Pct.
Coastal Academy	170	8	3.7%	7	4.2%	36	20.8%	72	42.4%
Corporate Academy	5	**	**	**	**	**	**	**	**
Early College	127	9	7.9%	3	2.9%	22	19.6%	8	6.3%
Fresh Start	45							3	6.7%
Scott L.C.	492	226	27.5%	188	37.9%	189	35.1%	175	35.6%

Attendance for Woodville Tompkins Career Institute students is reported with their home schools.

Enrollment/Student Count refers to compulsory and takes into account active and inactive students.

*Student count is defined per school and not by district; therefore, a student may count more than once at multiple sites.

**< 10 students

 New School

Truancy Counts by Subgroup

Gender	Enrollment*	Student Truancy Count*	Percent
Male	15,574	2,305	14.8%
Female	15,050	2,145	14.3%
Ethnicity	Enrollment*	Student Truancy Count*	Percent
Asian	568	36	6.3%
Black	17,858	2,703	15.1%
Hispanic	1,617	225	13.9%
American Indian	67	7	10.4%
Multi-Racial	1,925	269	14.0%
Pacific Islander	37	5	13.5%
White	8,552	1,205	14.1%
Subgroup	Enrollment*	Student Truancy Count*	Percent
Economically Disadvantaged	20,388	3,434	16.8%
English Learners	834	89	10.7%
Students with Disability	2,827	536	19.0%

District level report – unduplicated count

*Enrollment/Student Count refers to compulsory age and takes into account active and inactive students.